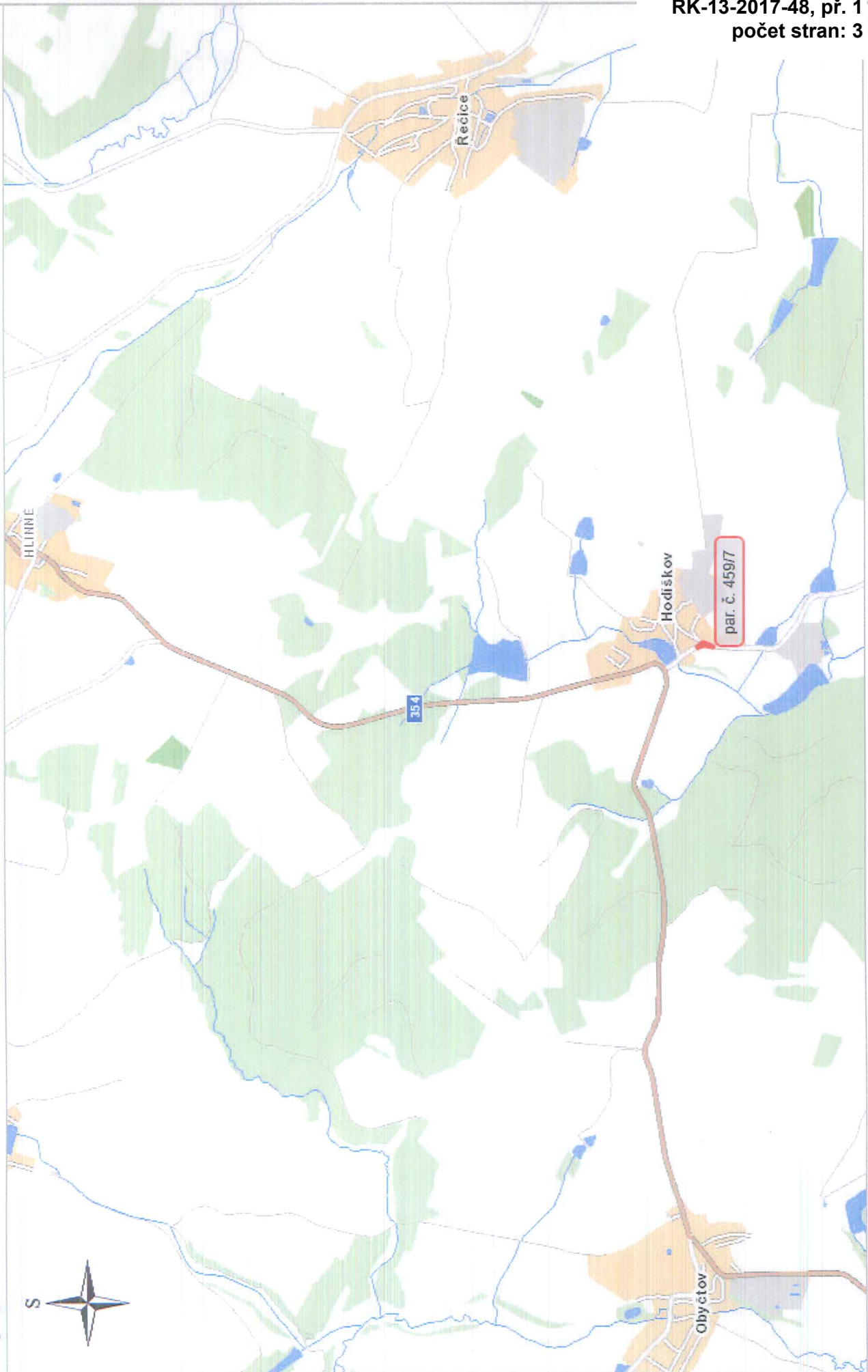
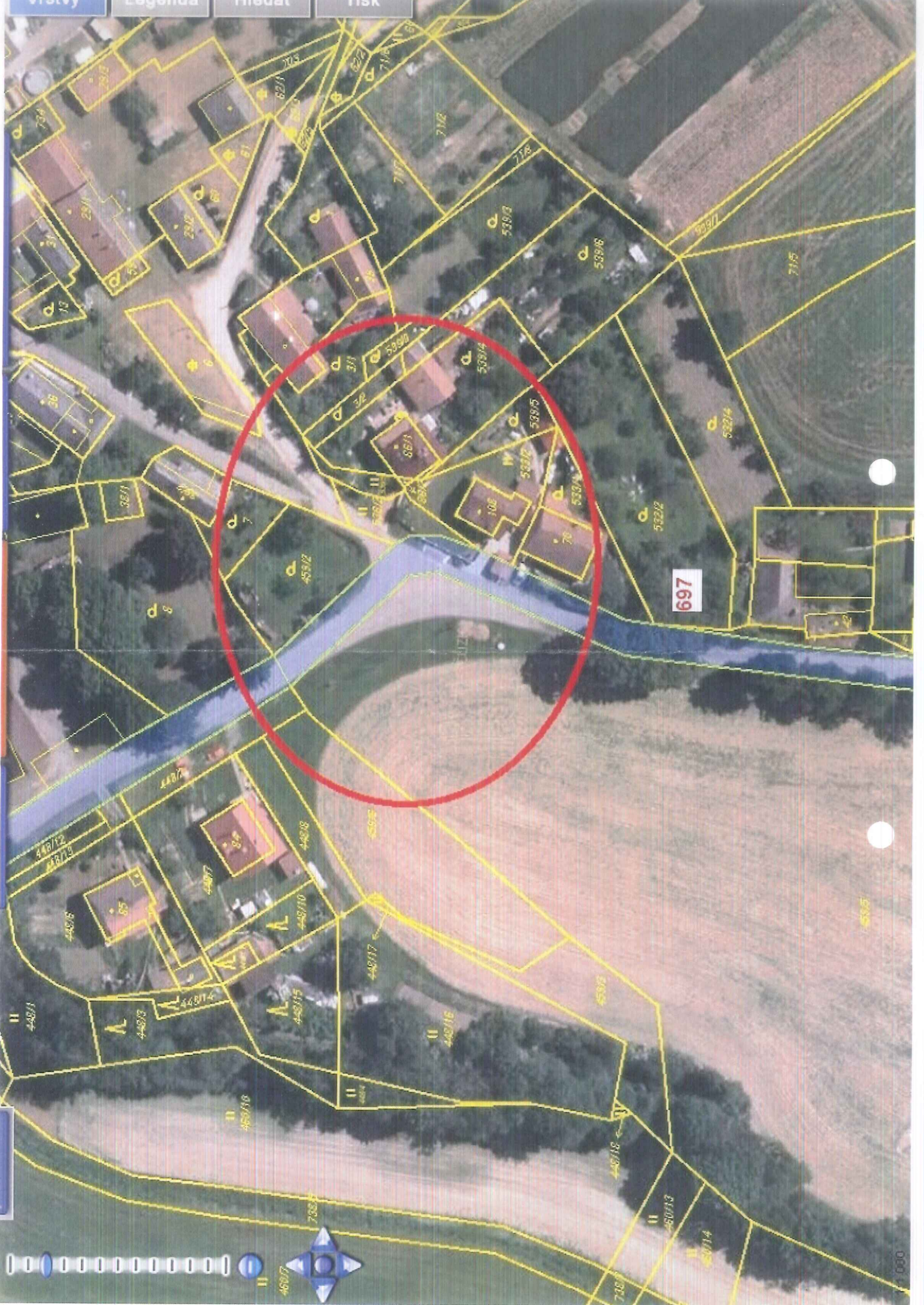
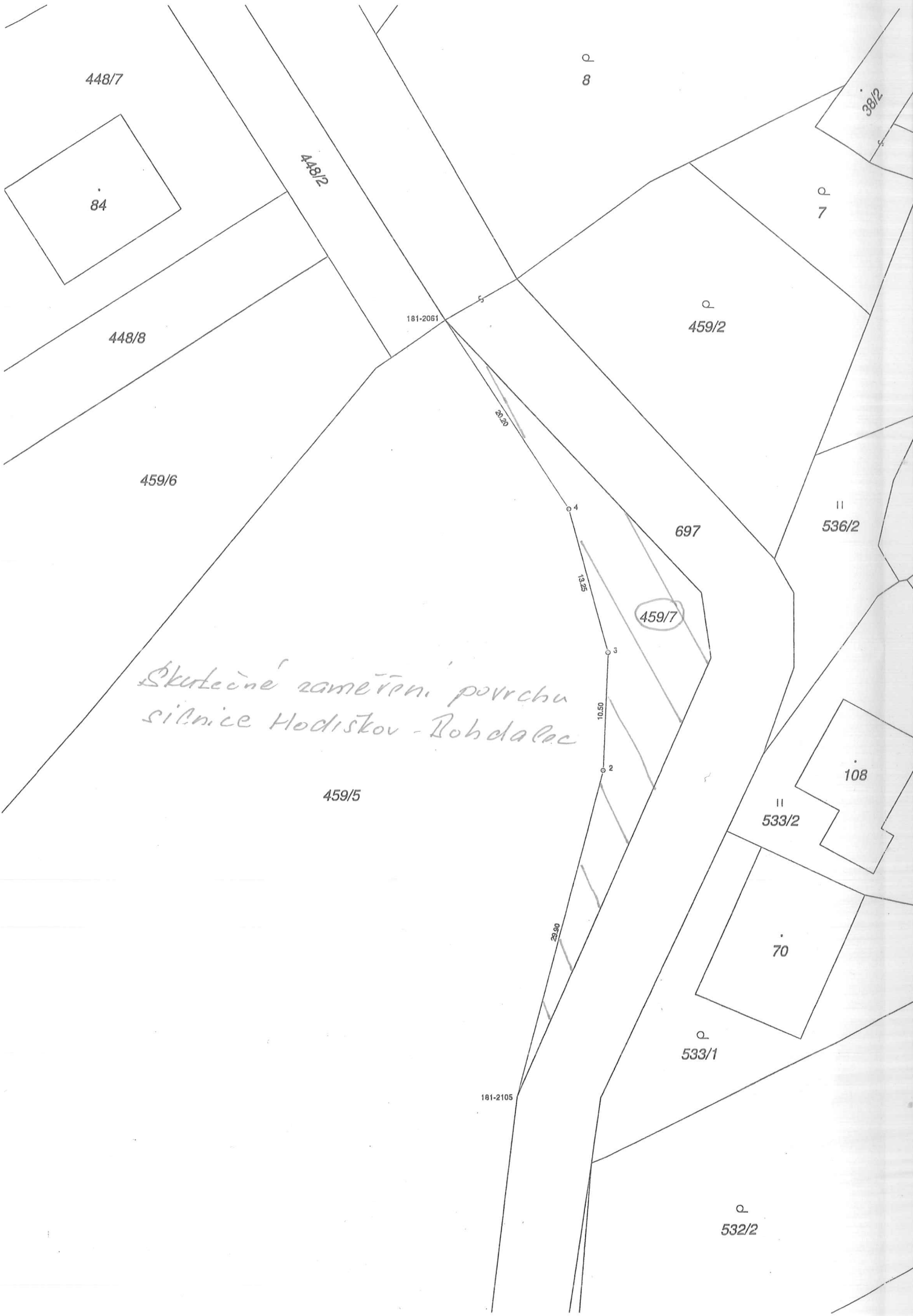


K.ú. Hodiškov





697



448/7

84

448/2

448/8

459/6

181-2061

20.20

p
8

38/2

p
7

p
459/2

697

II
536/2

459/7

*Skutečné zaměření povrchu
silnice Hodistkov - Bohdalec*

459/5

13.31

5.31

10.50

23.90

108

II
533/2

70

p
533/1

181-2105

p
532/2