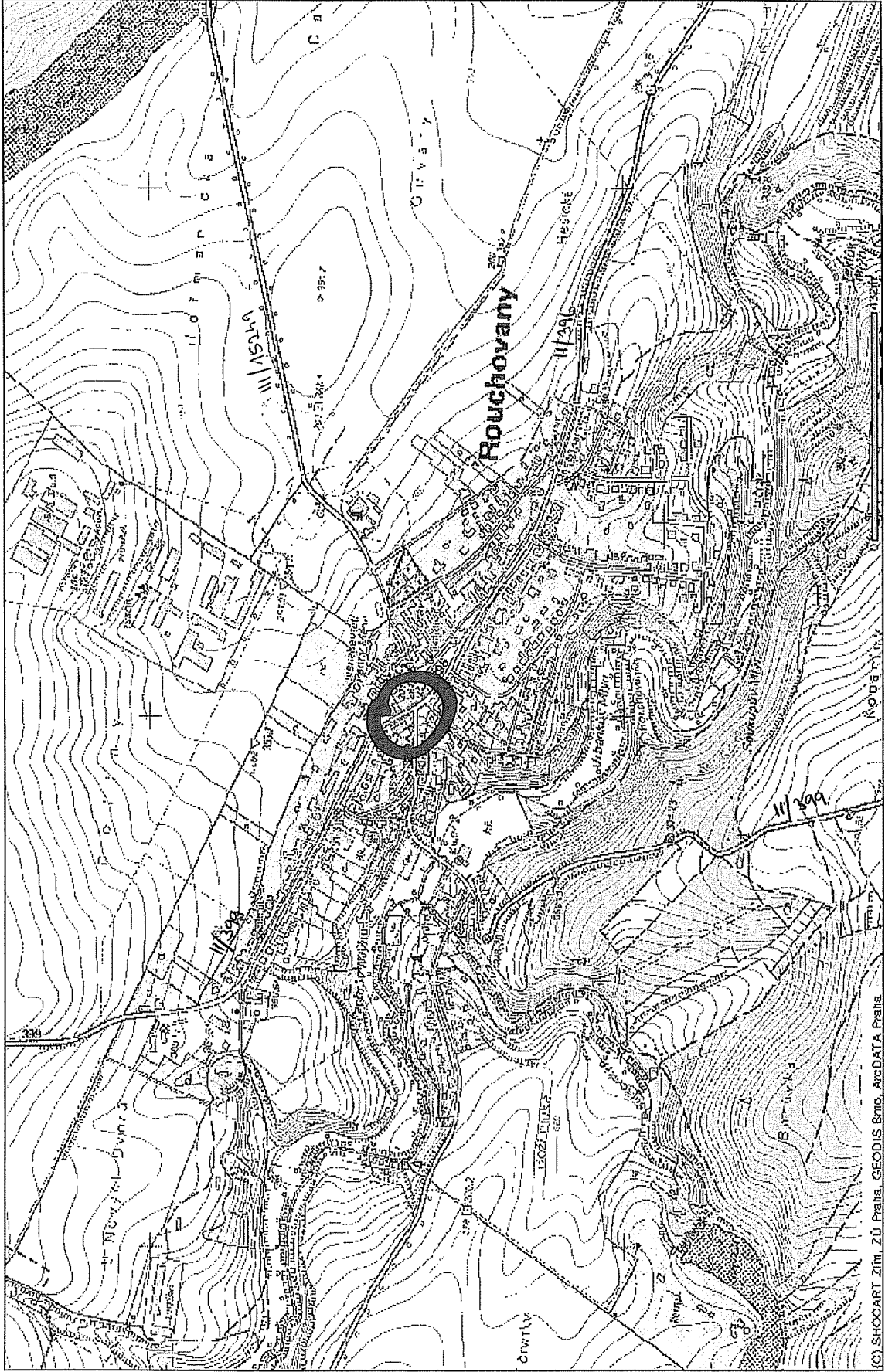
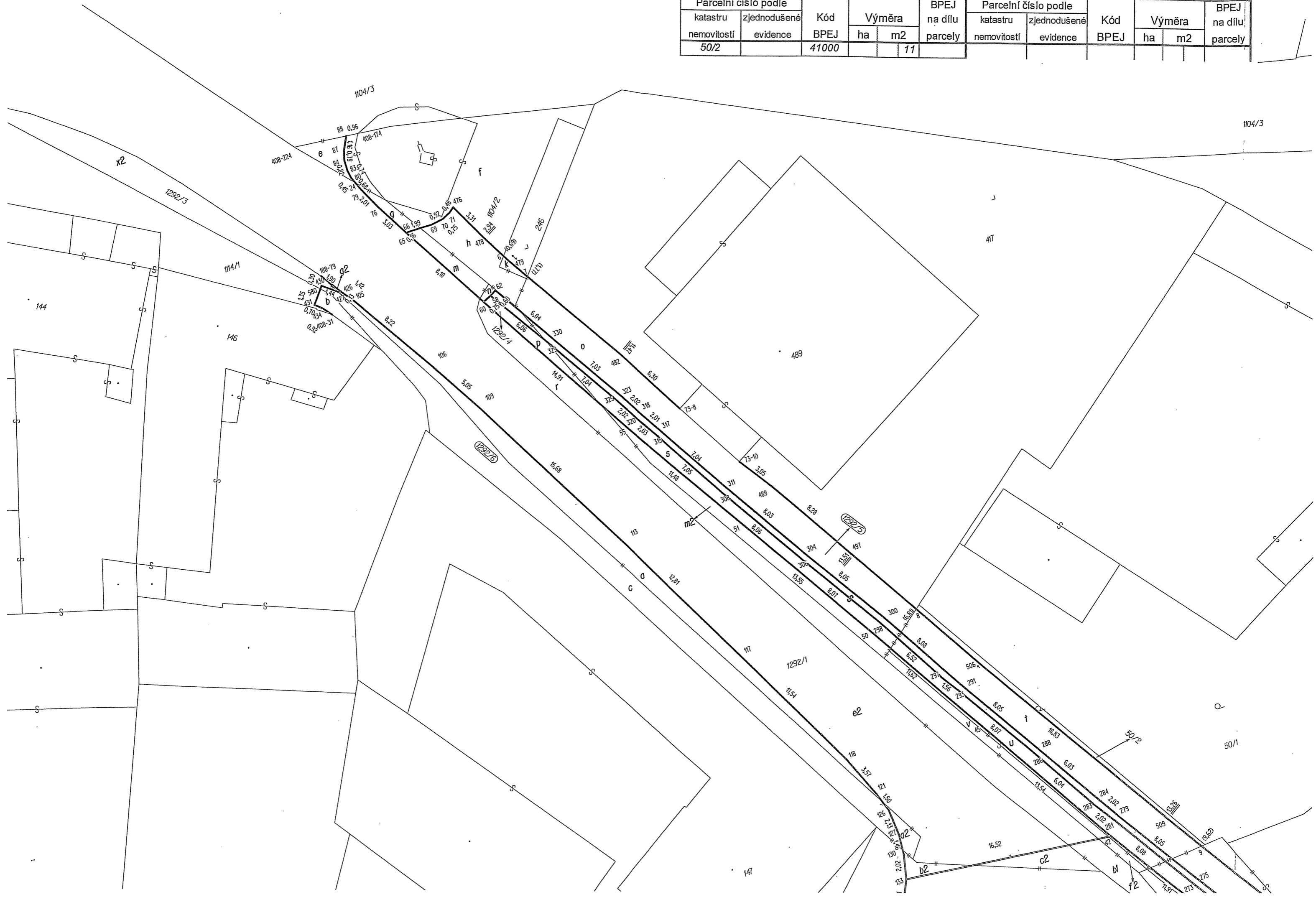


Vytvořeno
dne 2.
února 2011

Prohlížeč map ArcIMS HTML



Parcelní číslo podle katastru nemovitostí		Kód BPEJ	Výměra		BPEJ na dílu parcely	Parcelní číslo podle katastru nemovitostí		Kód BPEJ	Výměra		BPEJ na dílu parcely
zjednodušené evidence			ha	m2		zjednodušené evidence			ha	m2	
50/2		41000		11							





171	636033.03	1170565.54	3
173	636024.64	1170566.80	3
175	636024.26	1170564.61	3
176	636014.37	1170565.27	3
178	636014.74	1170567.50	3
179	636011.73	1170567.59	3
181	636011.83	1170565.36	3
182	636010.24	1170565.28	3
185	636007.75	1170565.08	3
187	636007.51	1170566.83	3
188	636003.91	1170564.64	3
191	636000.84	1170564.15	3
192	635998.74	1170563.68	3
195	635996.89	1170563.33	3
197	635994.35	1170563.06	3
200	635992.99	1170563.09	3
201	635991.14	1170563.36	3
204	635989.22	1170563.87	3
205	635987.79	1170564.41	3
208	635986.39	1170565.13	3
209	635985.10	1170566.05	3
212	635983.82	1170567.25	3
213	635982.06	1170569.24	3
216	635979.09	1170573.32	3
218	635960.91	1170581.58	3
221	635954.96	1170587.54	3 lom zidky
223	635955.49	1170588.11	3
225	635951.71	1170592.43	3
228	635948.69	1170595.74	3
229	635947.10	1170597.08	3
232	635945.45	1170598.15	3
233	635944.27	1170598.59	3
236	635943.17	1170598.87	3
237	635941.68	1170598.99	3
240	635940.19	1170598.90	3
241	635938.69	1170598.44	3
243	635944.52	1170609.91	3
397	636013.27	1170558.82	3
398	636045.19	1170564.47	3
399	636045.09	1170562.81	3
400	636046.14	1170562.73	3
401	636045.89	1170556.63	3
426	636022.90	1170491.10	3
427	636023.01	1170491.16	3
430	636024.12	1170490.23	3
431	636025.17	1170491.44	3
434	636024.65	1170491.93	3
476	636012.21	1170488.06	3
478	636010.82	1170491.02	3
479	636009.47	1170493.62	3
482	636003.79	1170503.57	3
483	635927.31	1170618.61	3 hřeb v asfaltu
484	635916.83	1170614.55	3
486	635946.05	1170608.43	3
489	635996.29	1170517.29	3
497	635992.22	1170524.54	3
506	635985.56	1170536.33	3
509	635976.08	1170552.58	3
514	635969.24	1170563.92	3
516	635965.38	1170569.70	3
518	635960.50	1170576.19	3
522	635952.65	1170585.99	3
528	635948.35	1170592.47	3
529	635948.51	1170592.60	3
531	635944.89	1170595.97	3
533	635944.03	1170596.46	3
534	635943.05	1170596.75	3
535	635941.70	1170596.85	3
536	635937.47	1170595.68	3
537	635937.26	1170595.53	3
539	635928.32	1170601.14	3
540	635928.65	1170602.65	3
541	635928.83	1170604.19	3
542	635928.76	1170605.76	3
543	635928.63	1170606.76	3
544	635928.25	1170607.96	3
550	635927.93	1170600.15	3
580	636024.29	1170490.44	3

