

## Analýza událostí na D1 v úseku kraje Vysočina

**Analýza událostí na D1 v úseku Kraje Vysočina, které mají vliv na bezpečnost a plynulost silničního provozu na krizové situace.**

Analýzovaný úsek komunikace: 74,00-166,999 km

### 1. Počty vozidel zúčastněných na dopravních nehodách na D1 v letech 2003/2005

|                                  | 2003  |       | 2004  |       | 6/2005 |       |
|----------------------------------|-------|-------|-------|-------|--------|-------|
|                                  | řidič | účast | řidič | účast | řidič  | účast |
| motocykl                         | 3     | 5     | 6     | 8     | 1      | 1     |
| osobní automobil                 | 740   | 1 299 | 860   | 1 590 | 369    | 672   |
| osobní automobil s přívěsem      | 14    | 28    | 14    | 30    | 5      | 9     |
| nákladní automobil               | 114   | 222   | 144   | 271   | 80     | 158   |
| nákladní automobil s<br>přívěsem | 19    | 59    | 34    | 78    | 19     | 34    |
| nákladní automobil s<br>návěsem  | 120   | 240   | 141   | 296   | 89     | 186   |
| autobus                          | 7     | 13    | 6     | 20    | 5      | 18    |
| jiné motorové vozidlo            | 0     | 1     | 0     | 2     | 0      | 0     |
| jiné nemotorové vozidlo          | 0     | 1     | 0     | 2     | 0      | 0     |
| nezjištěno, řidič ujel           | 61    | 94    | 61    | 104   | 17     | 39    |

V tabulce jsou uvedeny počty vozidel, u kterých řidiči byli zároveň viníky nehody a potom počty vozidel, které se na nehodě zúčastnily bez rozlišení, jestli nehodu zavinily nebo ne. Za rok 2005 jsou uváděna data za první pololetí.

Z uvedeného vyplývá nárůst počtů vozidel, která se na nehodách podílejí a to ve všech hlavních kategoriích – osobních automobilů, nákladních automobilů a zejména nákladních automobilů s návěsem. To ve svém důsledku znamená, že při „větším zapojení“ vozidel do jednotlivých událostí dochází většinou k rozsáhlejšímu omezení bezpečnosti a plynulosti dálničního provozu na D1.

## 2. Počty nehod a jejich následky

|                                  | 2003          |      |         |       |             | 2004          |      |         |       |             | 6/2005        |      |         |       |                |
|----------------------------------|---------------|------|---------|-------|-------------|---------------|------|---------|-------|-------------|---------------|------|---------|-------|----------------|
|                                  | suma<br>nehod | smrt | zraněno |       | odhad škody | suma<br>nehod | smrt | zraněno |       | odhad škody | suma<br>nehod | smrt | zraněno |       | odhad<br>škody |
|                                  |               |      | těžce   | lehce |             |               |      | těžce   | lehce |             |               |      | těžce   | lehce |                |
| celkem                           | 1 199         | 13   | 24      | 149   | 126 016 300 | 1 444         | 15   | 29      | 178   | 193 737 900 | 671           | 7    | 8       | 73    | 82 456 000     |
| ve směru<br>staničení            | 645           | 7    | 16      | 79    | 70 473 900  | 778           | 12   | 14      | 82    | 105 416 700 | 371           | 4    | 3       | 35    | 38 245 300     |
| proti směru<br>staničení         | 473           | 5    | 8       | 68    | 52 041 400  | 578           | 3    | 15      | 91    | 82 832 600  | 265           | 3    | 5       | 37    | 41 549 700     |
| nezaviněno<br>řidičem            | 67            | 1    | 0       | 3     | 3 377 000   | 104           | 0    | 0       | 1     | 5 144 000   | 50            | 3    | 0       | 2     | 2 235 000      |
| nepřiměřená<br>rychlost<br>jízdy | 321           | 5    | 6       | 62    | 30 890 300  | 449           | 4    | 8       | 87    | 72 423 000  | 198           | 1    | 2       | 22    | 24 665 300     |
| nesprávné<br>předjíždění         | 25            | 0    | 0       | 1     | 2 056 500   | 30            | 0    | 0       | 4     | 2 565 000   | 6             | 0    | 0       | 2     | 621 000        |
| nedání<br>přednosti v<br>jždě    | 25            | 0    | 1       | 4     | 2 000 000   | 29            | 6    | 1       | 6     | 7 927 600   | 20            | 0    | 0       | 4     | 2 920 000      |
| nesprávný<br>způsob jízdy        | 707           | 7    | 15      | 67    | 84 027 000  | 758           | 4    | 17      | 66    | 99 337 800  | 361           | 3    | 5       | 41    | 48 103 200     |
| technická<br>závada<br>vozidla   | 54            | 0    | 2       | 12    | 3 665 500   | 74            | 1    | 3       | 14    | 6 340 500   | 36            | 0    | 1       | 2     | 3 911 500      |

Největším počet nehod vznikl z důvodů nesprávného způsobu jízdy, nepřiměřené rychlosti. T tohoto hlediska je třeba v rámci preventivní části řešení studie proveditelnosti doporučit technické prostředky pro sledování překračování povolené rychlosti, vyhodnocování přestupků a postih na místě nebo ve správním řízení.

Poměrně dramaticky rostou i odhady škody, což také může být důkazem rozsáhlejšího omezení bezpečnosti a plynulosti silničního provozu vlivem těchto událostí.

## 3. Nebezpečné úseky na dálnici D1 v Kraji Vysočina

Podle průběhu nehodovosti podle staničení lze identifikovat místa, kde se pravidelně opakují nehody s nejtěžšími následky na zdraví a majetku.

**Nehodovost na dálnicích v České republice po kilometrech v roce 2003**

| ve směru staničení |       |    |    |    |           | proti směru staničení |       |    |    |    |           |
|--------------------|-------|----|----|----|-----------|-----------------------|-------|----|----|----|-----------|
| Číslo              | počet | SZ | TZ | LZ | škoda     | km                    | počet | SZ | TZ | LZ | škoda     |
| dálnice            | nehod |    |    |    | v Kč      |                       | nehod |    |    |    | v Kč      |
| 1                  | 2     | 0  | 0  | 0  | 220 000   | 74                    | 2     | 0  | 0  | 0  | 293 000   |
| 1                  | 6     | 0  | 0  | 0  | 740 000   | 75                    | 6     | 0  | 0  | 1  | 348 000   |
| 1                  | 3     | 0  | 0  | 0  | 210 000   | 76                    | 4     | 0  | 0  | 0  | 772 000   |
| 1                  | 7     | 0  | 0  | 0  | 856 000   | 77                    | 3     | 0  | 0  | 0  | 380 000   |
| 1                  | 1     | 0  | 0  | 0  | 95 000    | 78                    | 1     | 0  | 0  | 0  | 63 000    |
| 1                  | 4     | 0  | 0  | 1  | 614 000   | 79                    | 1     | 0  | 0  | 0  | 55 000    |
| 1                  | 3     | 0  | 0  | 1  | 431 000   | 80                    | 3     | 0  | 0  | 0  | 290 000   |
| 1                  | 7     | 0  | 0  | 0  | 552 000   | 81                    | 6     | 0  | 0  | 3  | 894 000   |
| 1                  | 20    | 0  | 0  | 0  | 1 568 000 | 82                    | 5     | 0  | 1  | 4  | 760 000   |
| 1                  | 11    | 0  | 0  | 0  | 1 095 000 | 83                    | 6     | 0  | 0  | 1  | 412 000   |
| 1                  | 5     | 0  | 0  | 0  | 862 000   | 84                    | 7     | 0  | 0  | 0  | 449 000   |
| 1                  | 1     | 0  | 0  | 0  | 90 000    | 85                    | 5     | 0  | 0  | 0  | 945 000   |
| 1                  | 1     | 0  | 0  | 0  | 65 000    | 86                    | 2     | 0  | 0  | 0  | 141 000   |
| 1                  | 3     | 0  | 0  | 0  | 243 000   | 87                    | 5     | 0  | 0  | 0  | 350 000   |
| 1                  | 3     | 0  | 0  | 0  | 350 000   | 88                    | 7     | 0  | 1  | 0  | 1 007 000 |
| 1                  | 2     | 0  | 0  | 0  | 61 000    | 89                    | 4     | 0  | 0  | 0  | 210 000   |
| 1                  | 13    | 2  | 1  | 3  | 2 190 000 | 90                    | 13    | 1  | 0  | 0  | 961 000   |
| 1                  | 24    | 0  | 1  | 2  | 2 907 000 | 91                    | 6     | 0  | 0  | 0  | 461 000   |
| 1                  | 8     | 0  | 0  | 0  | 548 000   | 92                    |       |    |    |    |           |
| 1                  | 13    | 0  | 0  | 0  | 858 000   | 93                    | 7     | 0  | 0  | 0  | 234 000   |
| 1                  | 4     | 0  | 0  | 0  | 471 000   | 94                    | 7     | 0  | 0  | 0  | 252 000   |
| 1                  | 31    | 1  | 0  | 3  | 2 633 000 | 95                    | 11    | 0  | 0  | 1  | 772 000   |
| 1                  | 15    | 0  | 0  | 0  | 1 608 000 | 96                    | 4     | 0  | 0  | 1  | 789 000   |
| 1                  | 4     | 0  | 0  | 0  | 392 000   | 97                    | 6     | 0  | 0  | 2  | 812 000   |
| 1                  | 9     | 0  | 0  | 0  | 529 100   | 98                    | 4     | 0  | 0  | 0  | 115 000   |
| 1                  | 6     | 0  | 0  | 0  | 758 000   | 99                    | 6     | 0  | 1  | 2  | 1 053 000 |
| 1                  | 4     | 0  | 0  | 0  | 318 000   | 100                   | 8     | 0  | 0  | 0  | 1 391 000 |
| 1                  | 4     | 0  | 1  | 3  | 938 500   | 101                   | 9     | 0  | 0  | 0  | 1 745 100 |
| 1                  | 4     | 0  | 0  | 0  | 1 400 000 | 102                   | 4     | 0  | 0  | 0  | 184 000   |
| 1                  | 3     | 1  | 2  | 0  | 1 676 000 | 103                   | 3     | 0  | 0  | 2  | 306 000   |
| 1                  | 7     | 0  | 0  | 0  | 938 000   | 104                   | 1     | 0  | 0  | 0  | 25 000    |
| 1                  | 2     | 0  | 0  | 0  | 135 100   | 105                   | 2     | 0  | 0  | 0  | 114 000   |
| 1                  |       |    |    |    |           | 106                   | 2     | 0  | 0  | 0  | 306 000   |
| 1                  | 8     | 0  | 2  | 3  | 1 434 000 | 107                   | 4     | 0  | 0  | 0  | 719 000   |

|   |    |   |   |   |           |     |    |   |   |   |           |
|---|----|---|---|---|-----------|-----|----|---|---|---|-----------|
| 1 |    |   |   |   |           | 108 | 1  | 0 | 0 | 0 | 25 000    |
| 1 | 4  | 0 | 0 | 0 | 575 000   | 109 | 6  | 0 | 0 | 1 | 562 100   |
| 1 | 3  | 0 | 0 | 1 | 475 000   | 110 | 6  | 0 | 1 | 0 | 1 372 500 |
| 1 | 9  | 0 | 0 | 0 | 563 000   | 111 | 9  | 0 | 0 | 1 | 582 500   |
| 1 | 9  | 0 | 0 | 1 | 1 614 000 | 112 | 5  | 0 | 0 | 0 | 482 000   |
| 1 | 5  | 0 | 0 | 1 | 990 000   | 113 | 2  | 0 | 1 | 2 | 105 000   |
| 1 | 7  | 0 | 0 | 0 | 440 000   | 114 | 5  | 0 | 0 | 1 | 802 000   |
| 1 | 1  | 0 | 0 | 0 | 120 000   | 115 | 6  | 0 | 0 | 1 | 1 737 000 |
| 1 | 2  | 0 | 0 | 0 | 685 000   | 116 | 5  | 0 | 0 | 0 | 1 329 000 |
| 1 | 9  | 0 | 0 | 0 | 2 120 000 | 117 | 5  | 0 | 0 | 1 | 2 083 000 |
| 1 | 3  | 0 | 0 | 0 | 353 000   | 118 | 5  | 0 | 0 | 0 | 538 000   |
| 1 | 3  | 0 | 0 | 0 | 903 000   | 119 | 7  | 0 | 0 | 1 | 648 000   |
| 1 | 5  | 0 | 0 | 0 | 204 000   | 120 | 8  | 1 | 0 | 5 | 1 170 000 |
| 1 | 8  | 1 | 1 | 4 | 849 000   | 121 | 7  | 0 | 0 | 3 | 997 000   |
| 1 | 9  | 0 | 1 | 1 | 2 186 000 | 122 | 5  | 0 | 0 | 0 | 642 500   |
| 1 | 8  | 0 | 0 | 0 | 629 100   | 123 | 5  | 0 | 0 | 0 | 525 000   |
| 1 | 4  | 0 | 0 | 1 | 780 000   | 124 | 6  | 0 | 0 | 1 | 647 000   |
| 1 | 5  | 0 | 0 | 1 | 371 000   | 125 | 5  | 0 | 0 | 1 | 1 326 000 |
| 1 | 7  | 0 | 0 | 1 | 1 205 000 | 126 | 2  | 0 | 0 | 0 | 1 120 000 |
| 1 | 9  | 0 | 0 | 0 | 1 674 500 | 127 | 3  | 0 | 0 | 0 | 452 000   |
| 1 | 14 | 0 | 0 | 1 | 1 964 000 | 128 | 3  | 0 | 0 | 0 | 403 500   |
| 1 | 13 | 0 | 0 | 0 | 1 340 000 | 129 | 5  | 0 | 0 | 0 | 304 000   |
| 1 | 8  | 0 | 0 | 0 | 621 000   | 130 | 4  | 0 | 0 | 1 | 1 323 000 |
| 1 | 8  | 0 | 0 | 2 | 591 500   | 131 | 6  | 0 | 1 | 1 | 610 000   |
| 1 | 7  | 0 | 0 | 1 | 940 000   | 132 | 7  | 0 | 0 | 0 | 580 000   |
| 1 | 5  | 0 | 0 | 0 | 535 000   | 133 | 8  | 0 | 0 | 1 | 785 000   |
| 1 | 5  | 0 | 0 | 0 | 262 000   | 134 | 2  | 0 | 0 | 0 | 166 000   |
| 1 | 4  | 0 | 1 | 0 | 445 000   | 135 | 4  | 0 | 0 | 0 | 181 000   |
| 1 | 6  | 0 | 0 | 0 | 589 000   | 136 | 7  | 0 | 0 | 0 | 515 000   |
| 1 | 6  | 0 | 0 | 2 | 802 000   | 137 | 4  | 0 | 0 | 0 | 396 000   |
| 1 | 6  | 0 | 0 | 1 | 222 000   | 138 | 2  | 0 | 0 | 1 | 95 000    |
| 1 | 10 | 0 | 0 | 0 | 718 000   | 139 | 8  | 0 | 0 | 1 | 1 510 500 |
| 1 | 7  | 0 | 0 | 1 | 611 500   | 140 | 3  | 0 | 0 | 2 | 90 000    |
| 1 | 2  | 0 | 0 | 0 | 100 000   | 141 | 7  | 0 | 0 | 7 | 2 175 000 |
| 1 | 13 | 0 | 2 | 2 | 1 454 000 | 142 | 7  | 0 | 0 | 1 | 214 000   |
| 1 | 5  | 0 | 0 | 0 | 332 000   | 143 | 5  | 0 | 0 | 1 | 326 000   |
| 1 | 4  | 0 | 0 | 0 | 183 000   | 144 | 2  | 0 | 0 | 1 | 186 000   |
| 1 | 4  | 0 | 0 | 0 | 116 500   | 145 | 18 | 0 | 0 | 1 | 841 200   |
| 1 | 2  | 0 | 0 | 2 | 228 000   | 146 | 4  | 2 | 1 | 0 | 200 500   |

|        |     |   |    |    |            |     |     |   |   |    |            |
|--------|-----|---|----|----|------------|-----|-----|---|---|----|------------|
| 1      | 8   | 0 | 0  | 0  | 672 000    | 147 | 5   | 0 | 0 | 0  | 215 000    |
| 1      | 11  | 0 | 0  | 2  | 1 397 000  | 148 | 1   | 1 | 0 | 4  | 30 000     |
| 1      | 17  | 0 | 0  | 0  | 1 417 000  | 149 | 5   | 0 | 0 | 0  | 264 000    |
| 1      | 10  | 0 | 1  | 6  | 1 105 000  | 150 | 2   | 0 | 0 | 0  | 64 000     |
| 1      | 5   | 0 | 0  | 1  | 280 000    | 151 | 5   | 0 | 0 | 0  | 516 000    |
| 1      | 8   | 0 | 1  | 2  | 953 000    | 152 | 5   | 0 | 0 | 0  | 175 000    |
| 1      | 10  | 0 | 0  | 0  | 825 000    | 153 | 3   | 0 | 0 | 0  | 120 000    |
| 1      | 7   | 0 | 0  | 1  | 697 000    | 154 | 6   | 0 | 0 | 2  | 563 000    |
| 1      | 12  | 0 | 0  | 5  | 1 520 000  | 155 | 3   | 0 | 0 | 0  | 110 000    |
| 1      | 2   | 0 | 0  | 0  | 130 000    | 156 | 2   | 0 | 0 | 0  | 85 000     |
| 1      | 5   | 0 | 0  | 2  | 304 000    | 157 | 7   | 0 | 0 | 2  | 465 000    |
| 1      | 14  | 0 | 0  | 5  | 821 000    | 158 | 12  | 0 | 0 | 2  | 1 175 000  |
| 1      | 4   | 0 | 0  | 0  | 162 000    | 159 | 4   | 0 | 0 | 0  | 245 000    |
| 1      | 6   | 0 | 0  | 1  | 441 000    | 160 | 6   | 0 | 0 | 1  | 200 000    |
| 1      | 6   | 0 | 0  | 0  | 345 000    | 161 | 5   | 0 | 0 | 0  | 112 000    |
| 1      | 13  | 1 | 0  | 1  | 680 100    | 162 | 6   | 0 | 1 | 3  | 566 000    |
| 1      | 5   | 0 | 0  | 3  | 240 000    | 163 | 5   | 0 | 0 | 0  | 139 000    |
| 1      | 6   | 0 | 1  | 1  | 750 000    | 164 | 3   | 0 | 0 | 0  | 180 000    |
| 1      | 7   | 0 | 0  | 8  | 277 000    | 165 | 3   | 0 | 0 | 0  | 161 000    |
| 1      | 12  | 1 | 1  | 2  | 881 000    | 166 | 12  | 0 | 0 | 1  | 1 001 000  |
|        |     |   |    |    |            |     |     |   |   |    |            |
|        |     |   |    |    |            |     |     |   |   |    |            |
| celkem | 645 | 7 | 16 | 79 | 70 473 900 |     | 473 | 5 | 8 | 68 | 52 041 400 |

| <b>Nehodovost na dálnicích v České republice po kilometrech v roce 2004</b> |       |    |    |    |           |                       |       |    |    |    |           |
|---|-------|----|----|----|-----------|-----------------------|-------|----|----|----|-----------|
| ve směru staničení  |       |    |    |    |           | proti směru staničení |       |    |    |    |           |
| Číslo   | počet | SZ | TZ | LZ | škoda     | km                    | počet | SZ | TZ | LZ | škoda     |
| dálnice   | nehod |    |    |    | v Kč      |                       | nehod |    |    |    | v Kč      |
| 1   | 6     | 0  | 0  | 0  | 452 100   | 74                    |       |    |    |    |           |
| 1   | 9     | 0  | 0  | 2  | 844 000   | 75                    | 3     | 0  | 0  | 0  | 270 000   |
| 1   | 5     | 1  | 1  | 1  | 627 000   | 76                    | 3     | 0  | 0  | 0  | 775 000   |
| 1   | 2     | 0  | 0  | 0  | 370 000   | 77                    | 9     | 0  | 0  | 0  | 443 000   |
| 1   | 4     | 0  | 0  | 0  | 403 000   | 78                    | 5     | 0  | 0  | 2  | 746 000   |
| 1   | 5     | 0  | 0  | 0  | 575 000   | 79                    | 4     | 0  | 0  | 0  | 144 000   |
| 1   | 5     | 0  | 0  | 1  | 1 262 000 | 80                    | 3     | 0  | 0  | 0  | 510 000   |
| 1   | 3     | 0  | 0  | 0  | 278 000   | 81                    | 4     | 0  | 0  | 0  | 351 000   |
| 1   | 29    | 0  | 0  | 1  | 4 783 000 | 82                    | 9     | 0  | 1  | 2  | 817 000   |
| 1   | 17    | 0  | 1  | 0  | 2 346 000 | 83                    | 15    | 0  | 0  | 3  | 2 739 100 |

|   |  |    |   |   |   |           |     |    |   |   |   |           |
|---|--|----|---|---|---|-----------|-----|----|---|---|---|-----------|
| 1 |  | 6  | 0 | 0 | 0 | 281 000   | 84  | 19 | 0 | 0 | 1 | 1 985 000 |
| 1 |  | 6  | 0 | 0 | 0 | 356 000   | 85  | 18 | 0 | 0 | 3 | 2 975 000 |
| 1 |  | 2  | 0 | 0 | 0 | 71 500    | 86  | 3  | 0 | 1 | 0 | 318 000   |
| 1 |  | 2  | 0 | 0 | 0 | 241 000   | 87  | 4  | 0 | 0 | 1 | 495 000   |
| 1 |  | 5  | 0 | 0 | 0 | 541 000   | 88  | 3  | 0 | 0 | 0 | 165 500   |
| 1 |  | 2  | 0 | 0 | 0 | 29 000    | 89  | 7  | 0 | 0 | 0 | 696 000   |
| 1 |  | 4  | 0 | 0 | 0 | 1 086 000 | 90  | 10 | 0 | 0 | 1 | 882 000   |
| 1 |  | 11 | 0 | 0 | 1 | 847 000   | 91  | 6  | 0 | 0 | 0 | 637 000   |
| 1 |  |    |   |   |   |           | 92  | 2  | 0 | 0 | 0 | 425 000   |
| 1 |  | 5  | 0 | 0 | 2 | 787 000   | 93  | 3  | 0 | 0 | 0 | 112 000   |
| 1 |  | 2  | 0 | 0 | 0 | 38 000    | 94  | 3  | 0 | 0 | 0 | 167 000   |
| 1 |  | 36 | 0 | 0 | 2 | 3 506 600 | 95  | 9  | 0 | 1 | 0 | 1 430 000 |
| 1 |  | 11 | 0 | 0 | 1 | 1 340 000 | 96  | 7  | 0 | 0 | 2 | 926 500   |
| 1 |  | 9  | 0 | 0 | 0 | 779 100   | 97  | 11 | 0 | 2 | 1 | 1 994 000 |
| 1 |  | 9  | 0 | 0 | 0 | 1 256 000 | 98  | 5  | 0 | 0 | 0 | 366 000   |
| 1 |  | 1  | 0 | 1 | 2 | 170 000   | 99  | 4  | 0 | 0 | 1 | 583 000   |
| 1 |  | 2  | 0 | 0 | 2 | 120 000   | 100 | 11 | 0 | 0 | 1 | 1 137 500 |
| 1 |  | 6  | 0 | 0 | 0 | 498 000   | 101 | 2  | 0 | 0 | 2 | 430 000   |
| 1 |  | 9  | 0 | 0 | 0 | 4 477 100 | 102 | 6  | 0 | 0 | 3 | 540 000   |
| 1 |  | 18 | 0 | 0 | 2 | 3 029 100 | 103 | 8  | 0 | 0 | 0 | 612 000   |
| 1 |  | 18 | 0 | 0 | 4 | 2 643 000 | 104 | 11 | 0 | 0 | 0 | 922 000   |
| 1 |  | 5  | 0 | 0 | 1 | 551 000   | 105 | 4  | 0 | 0 | 0 | 331 500   |
| 1 |  | 3  | 0 | 0 | 0 | 212 500   | 106 | 2  | 0 | 0 | 0 | 61 500    |
| 1 |  | 16 | 0 | 0 | 5 | 1 650 500 | 107 | 4  | 0 | 0 | 1 | 1 103 000 |
| 1 |  | 14 | 0 | 0 | 0 | 1 273 000 | 108 | 7  | 0 | 1 | 0 | 6 712 000 |
| 1 |  | 10 | 0 | 1 | 0 | 1 292 000 | 109 | 2  | 0 | 0 | 0 | 83 000    |
| 1 |  | 6  | 0 | 0 | 0 | 307 500   | 110 | 11 | 0 | 0 | 0 | 818 000   |
| 1 |  | 12 | 1 | 0 | 0 | 945 700   | 111 | 9  | 0 | 0 | 2 | 754 000   |
| 1 |  | 13 | 0 | 1 | 0 | 1 751 100 | 112 | 2  | 0 | 0 | 0 | 76 000    |
| 1 |  | 9  | 0 | 0 | 0 | 7 890 000 | 113 | 7  | 0 | 2 | 3 | 883 000   |
| 1 |  | 7  | 0 | 0 | 1 | 1 316 000 | 114 | 2  | 0 | 0 | 0 | 311 000   |
| 1 |  | 6  | 0 | 0 | 0 | 523 000   | 115 | 8  | 0 | 0 | 1 | 1 149 000 |
| 1 |  | 4  | 0 | 0 | 0 | 177 000   | 116 | 5  | 0 | 0 | 1 | 641 000   |
| 1 |  | 4  | 0 | 0 | 0 | 732 000   | 117 | 8  | 0 | 0 | 0 | 2 256 000 |
| 1 |  | 5  | 1 | 2 | 1 | 324 000   | 118 | 9  | 1 | 2 | 3 | 1 021 000 |
| 1 |  | 7  | 0 | 0 | 0 | 524 000   | 119 | 8  | 0 | 0 | 4 | 1 111 000 |
| 1 |  | 5  | 0 | 0 | 0 | 499 000   | 120 | 7  | 0 | 0 | 0 | 541 000   |
| 1 |  | 4  | 0 | 0 | 1 | 419 000   | 121 | 7  | 1 | 0 | 1 | 7 092 000 |
| 1 |  | 8  | 0 | 0 | 0 | 360 000   | 122 | 11 | 0 | 0 | 8 | 6 225 000 |

|   |  |    |   |   |   |           |     |    |   |   |   |           |
|---|--|----|---|---|---|-----------|-----|----|---|---|---|-----------|
| 1 |  | 6  | 0 | 0 | 0 | 738 000   | 123 | 5  | 0 | 1 | 1 | 871 000   |
| 1 |  | 8  | 0 | 0 | 0 | 1 474 000 | 124 | 10 | 0 | 0 | 2 | 2 026 000 |
| 1 |  | 10 | 0 | 0 | 1 | 891 000   | 125 | 3  | 0 | 0 | 0 | 840 500   |
| 1 |  | 12 | 0 | 0 | 1 | 3 961 000 | 126 | 1  | 0 | 0 | 0 | 20 000    |
| 1 |  | 9  | 0 | 0 | 0 | 635 000   | 127 | 3  | 0 | 0 | 0 | 297 000   |
| 1 |  | 13 | 1 | 0 | 2 | 1 911 000 | 128 | 6  | 0 | 0 | 0 | 881 000   |
| 1 |  | 12 | 0 | 0 | 1 | 2 778 000 | 129 | 8  | 0 | 0 | 1 | 815 000   |
| 1 |  | 8  | 0 | 0 | 2 | 1 324 000 | 130 | 5  | 0 | 0 | 1 | 539 000   |
| 1 |  | 7  | 0 | 0 | 1 | 715 000   | 131 | 5  | 0 | 0 | 0 | 723 000   |
| 1 |  | 5  | 0 | 0 | 0 | 690 000   | 132 | 5  | 0 | 0 | 2 | 969 000   |
| 1 |  | 7  | 0 | 0 | 0 | 848 000   | 133 | 4  | 0 | 0 | 4 | 226 000   |
| 1 |  | 11 | 0 | 0 | 0 | 549 800   | 134 | 2  | 0 | 0 | 1 | 475 000   |
| 1 |  | 4  | 0 | 0 | 0 | 355 000   | 135 | 13 | 0 | 0 | 4 | 3 221 000 |
| 1 |  | 7  | 0 | 0 | 0 | 670 500   | 136 | 4  | 0 | 0 | 0 | 312 000   |
| 1 |  | 5  | 0 | 0 | 0 | 608 000   | 137 | 4  | 0 | 0 | 0 | 235 000   |
| 1 |  | 9  | 1 | 0 | 0 | 3 177 000 | 138 | 2  | 0 | 0 | 0 | 50 500    |
| 1 |  | 12 | 0 | 0 | 1 | 620 000   | 139 | 5  | 0 | 0 | 0 | 529 000   |
| 1 |  | 13 | 0 | 0 | 3 | 2 280 600 | 140 | 1  | 0 | 0 | 0 | 24 000    |
| 1 |  | 11 | 0 | 2 | 0 | 2 072 000 | 141 | 4  | 0 | 0 | 0 | 266 000   |
| 1 |  | 13 | 0 | 0 | 2 | 911 000   | 142 | 4  | 0 | 0 | 0 | 252 000   |
| 1 |  | 13 | 0 | 0 | 0 | 742 000   | 143 | 10 | 0 | 0 | 0 | 514 000   |
| 1 |  | 16 | 0 | 0 | 1 | 1 576 000 | 144 | 9  | 0 | 0 | 1 | 1 091 000 |
| 1 |  | 5  | 0 | 0 | 0 | 296 000   | 145 | 17 | 0 | 1 | 0 | 1 241 500 |
| 1 |  | 4  | 0 | 0 | 0 | 167 500   | 146 | 3  | 0 | 0 | 0 | 45 000    |
| 1 |  | 4  | 0 | 0 | 0 | 177 000   | 147 | 5  | 0 | 1 | 5 | 625 000   |
| 1 |  | 14 | 1 | 1 | 0 | 1 168 500 | 148 | 10 | 0 | 1 | 5 | 1 383 000 |
| 1 |  | 7  | 0 | 0 | 0 | 740 000   | 149 | 9  | 1 | 0 | 3 | 767 500   |
| 1 |  | 8  | 0 | 0 | 0 | 723 000   | 150 | 7  | 0 | 0 | 0 | 370 000   |
| 1 |  | 8  | 0 | 0 | 1 | 860 000   | 151 | 9  | 0 | 0 | 2 | 771 000   |
| 1 |  | 12 | 0 | 0 | 0 | 663 000   | 152 | 4  | 0 | 0 | 3 | 932 000   |
| 1 |  | 8  | 0 | 0 | 5 | 595 000   | 153 | 8  | 0 | 1 | 2 | 685 000   |
| 1 |  | 3  | 0 | 0 | 0 | 150 000   | 154 | 1  | 0 | 0 | 0 | 150 000   |
| 1 |  | 9  | 0 | 0 | 2 | 791 000   | 155 | 3  | 0 | 0 | 0 | 222 000   |
| 1 |  | 5  | 0 | 1 | 4 | 543 000   | 156 | 2  | 0 | 0 | 1 | 98 000    |
| 1 |  | 7  | 0 | 0 | 4 | 667 000   | 157 | 3  | 0 | 0 | 0 | 105 000   |
| 1 |  | 14 | 0 | 0 | 3 | 1 715 000 | 158 | 11 | 0 | 0 | 4 | 1 062 000 |
| 1 |  | 12 | 0 | 0 | 3 | 1 371 000 | 159 | 6  | 0 | 0 | 0 | 222 000   |
| 1 |  | 6  | 0 | 0 | 2 | 351 000   | 160 | 12 | 0 | 0 | 1 | 950 000   |
| 1 |  | 3  | 0 | 0 | 1 | 390 000   | 161 | 3  | 0 | 0 | 0 | 53 000    |

|        |     |    |    |    |             |     |     |   |    |    |            |
|--------|-----|----|----|----|-------------|-----|-----|---|----|----|------------|
| 1      | 10  | 0  | 0  | 1  | 637 000     | 162 | 4   | 0 | 0  | 0  | 310 000    |
| 1      | 11  | 0  | 0  | 0  | 1 070 000   | 163 | 2   | 0 | 0  | 0  | 69 000     |
| 1      | 11  | 0  | 2  | 4  | 2 167 000   | 164 | 9   | 0 | 0  | 1  | 930 000    |
| 1      | 5   | 0  | 0  | 0  | 382 000     | 165 | 8   | 0 | 0  | 0  | 456 000    |
| 1      | 14  | 6  | 1  | 7  | 5 482 000   | 166 | 9   | 0 | 0  | 0  | 446 000    |
|        |     |    |    |    |             |     |     |   |    |    |            |
|        |     |    |    |    |             |     |     |   |    |    |            |
| celkem | 778 | 12 | 14 | 82 | 105 416 700 |     | 578 | 3 | 15 | 91 | 82 832 600 |

| <b><u>Nehodovost na dálnicích v České republice po kilometrech v pololetí 2005</u></b> |       |    |    |    |           |                       |       |    |    |    |           |
|--|-------|----|----|----|-----------|-----------------------|-------|----|----|----|-----------|
| ve směru staničení   |       |    |    |    |           | proti směru staničení |       |    |    |    |           |
| Číslo  | počet | SZ | TZ | LZ | škoda     | km                    | počet | SZ | TZ | LZ | škoda     |
| dálnice  | nehod |    |    |    | v Kč      |                       | nehod |    |    |    | v Kč      |
| 1  | 1     | 0  | 0  | 0  | 260 000   | 74                    | 2     | 0  | 0  | 0  | 144 000   |
| 1  | 3     | 0  | 0  | 3  | 375 000   | 75                    | 2     | 0  | 0  | 0  | 115 000   |
| 1  | 1     | 0  | 0  | 0  | 31 000    | 76                    | 2     | 0  | 0  | 0  | 130 000   |
| 1  | 3     | 0  | 0  | 1  | 166 000   | 77                    | 3     | 0  | 0  | 0  | 56 000    |
| 1  | 2     | 0  | 0  | 0  | 212 000   | 78                    | 1     | 0  | 0  | 0  | 30 000    |
| 1  | 1     | 0  | 0  | 0  | 30 000    | 79                    |       |    |    |    |           |
| 1  | 2     | 0  | 0  | 0  | 11 000    | 80                    | 2     | 0  | 0  | 0  | 101 000   |
| 1  | 4     | 0  | 0  | 0  | 306 000   | 81                    | 1     | 0  | 0  | 0  | 60 000    |
| 1  | 17    | 0  | 0  | 0  | 2 554 000 | 82                    | 2     | 0  | 0  | 0  | 180 000   |
| 1  | 6     | 0  | 0  | 0  | 538 000   | 83                    | 2     | 0  | 0  | 2  | 175 000   |
| 1  | 2     | 0  | 0  | 1  | 218 000   | 84                    | 6     | 0  | 0  | 1  | 892 000   |
| 1  | 3     | 0  | 0  | 0  | 540 000   | 85                    | 3     | 0  | 0  | 3  | 630 000   |
| 1  |       |    |    |    |           | 86                    |       |    |    |    |           |
| 1  | 2     | 0  | 0  | 0  | 391 000   | 87                    |       |    |    |    |           |
| 1  | 2     | 1  | 0  | 0  | 140 000   | 88                    | 1     | 0  | 0  | 1  | 70 000    |
| 1  | 3     | 0  | 0  | 0  | 285 000   | 89                    | 1     | 0  | 0  | 0  | 50 000    |
| 1  | 4     | 0  | 0  | 1  | 97 000    | 90                    | 5     | 0  | 0  | 1  | 396 500   |
| 1  | 4     | 0  | 0  | 0  | 359 000   | 91                    | 2     | 0  | 0  | 0  | 500 000   |
| 1  | 2     | 0  | 0  | 0  | 129 000   | 92                    |       |    |    |    |           |
| 1  | 1     | 0  | 0  | 1  | 205 000   | 93                    | 1     | 0  | 0  | 0  | 2 000     |
| 1  | 2     | 0  | 0  | 0  | 201 000   | 94                    | 2     | 0  | 0  | 0  | 145 000   |
| 1  | 18    | 0  | 0  | 0  | 962 500   | 95                    | 5     | 0  | 0  | 0  | 113 000   |
| 1  | 6     | 0  | 0  | 0  | 202 000   | 96                    | 3     | 0  | 1  | 1  | 1 060 000 |
| 1  | 4     | 0  | 0  | 0  | 202 000   | 97                    | 3     | 0  | 0  | 2  | 1 513 000 |
| 1  | 6     | 0  | 0  | 0  | 495 000   | 98                    |       |    |    |    |           |
| 1  | 6     | 0  | 0  | 0  | 589 000   | 99                    | 3     | 0  | 0  | 0  | 510 000   |



|   |  |    |   |   |   |           |     |    |   |   |   |           |
|---|--|----|---|---|---|-----------|-----|----|---|---|---|-----------|
| 1 |  | 2  | 0 | 1 | 0 | 292 000   | 100 | 9  | 0 | 0 | 1 | 2 063 000 |
| 1 |  | 2  | 0 | 0 | 0 | 182 000   | 101 | 1  | 0 | 0 | 0 | 71 000    |
| 1 |  | 4  | 0 | 0 | 1 | 1 154 000 | 102 | 2  | 0 | 0 | 0 | 96 000    |
| 1 |  | 3  | 0 | 0 | 0 | 102 000   | 103 | 2  | 0 | 0 | 0 | 23 000    |
| 1 |  | 5  | 0 | 0 | 0 | 728 000   | 104 | 3  | 0 | 0 | 1 | 380 000   |
| 1 |  | 4  | 0 | 0 | 0 | 271 000   | 105 | 3  | 0 | 0 | 0 | 151 500   |
| 1 |  | 1  | 0 | 0 | 0 | 19 000    | 106 | 3  | 0 | 0 | 0 | 935 500   |
| 1 |  | 8  | 0 | 0 | 1 | 1 638 000 | 107 | 5  | 0 | 0 | 0 | 575 000   |
| 1 |  | 3  | 0 | 0 | 0 | 154 000   | 108 | 1  | 0 | 0 | 0 | 160 000   |
| 1 |  | 1  | 0 | 0 | 0 | 101 000   | 109 | 1  | 0 | 0 | 0 | 750 000   |
| 1 |  | 1  | 0 | 0 | 0 | 39 000    | 110 | 5  | 1 | 0 | 1 | 1 866 500 |
| 1 |  | 11 | 0 | 0 | 0 | 1 162 300 | 111 | 12 | 0 | 0 | 1 | 1 511 600 |
| 1 |  | 3  | 0 | 0 | 0 | 263 000   | 112 | 8  | 0 | 0 | 1 | 1 311 000 |
| 1 |  | 1  | 0 | 0 | 0 | 100 000   | 113 | 1  | 0 | 0 | 0 | 28 000    |
| 1 |  | 3  | 0 | 0 | 0 | 99 500    | 114 | 6  | 0 | 1 | 1 | 592 000   |
| 1 |  | 4  | 1 | 0 | 1 | 606 000   | 115 | 3  | 0 | 0 | 0 | 206 000   |
| 1 |  | 1  | 0 | 1 | 0 | 60 000    | 116 | 4  | 0 | 0 | 1 | 1 031 000 |
| 1 |  | 2  | 0 | 0 | 0 | 116 000   | 117 | 3  | 0 | 0 | 0 | 236 000   |
| 1 |  | 3  | 0 | 0 | 0 | 861 000   | 118 | 2  | 0 | 0 | 2 | 754 000   |
| 1 |  | 1  | 0 | 0 | 0 | 18 000    | 119 | 2  | 0 | 0 | 2 | 325 000   |
| 1 |  | 1  | 0 | 0 | 0 | 850 000   | 120 | 5  | 0 | 0 | 2 | 867 000   |
| 1 |  | 4  | 0 | 0 | 0 | 181 000   | 121 | 7  | 0 | 0 | 1 | 619 000   |
| 1 |  | 5  | 0 | 0 | 0 | 298 000   | 122 | 3  | 0 | 0 | 0 | 214 300   |
| 1 |  |    |   |   |   |           | 123 | 3  | 0 | 0 | 0 | 161 000   |
| 1 |  | 1  | 0 | 0 | 0 | 505 000   | 124 | 2  | 0 | 0 | 2 | 223 000   |
| 1 |  | 4  | 0 | 0 | 0 | 516 000   | 125 | 1  | 0 | 0 | 0 | 61 000    |
| 1 |  | 2  | 0 | 0 | 0 | 136 000   | 126 | 2  | 0 | 0 | 1 | 295 000   |
| 1 |  | 1  | 0 | 0 | 0 | 165 000   | 127 | 3  | 0 | 0 | 0 | 370 000   |
| 1 |  | 4  | 0 | 0 | 2 | 332 000   | 128 | 2  | 0 | 0 | 0 | 71 000    |
| 1 |  | 6  | 0 | 0 | 0 | 1 088 000 | 129 | 2  | 0 | 0 | 0 | 111 000   |
| 1 |  | 4  | 0 | 0 | 0 | 382 500   | 130 | 1  | 0 | 0 | 0 | 152 000   |
| 1 |  | 5  | 0 | 0 | 0 | 493 000   | 131 |    |   |   |   |           |
| 1 |  | 5  | 0 | 0 | 0 | 467 000   | 132 | 2  | 0 | 0 | 0 | 115 000   |
| 1 |  | 1  | 0 | 0 | 0 | 22 000    | 133 | 2  | 0 | 0 | 2 | 415 000   |
| 1 |  | 2  | 0 | 0 | 0 | 195 000   | 134 | 2  | 0 | 0 | 0 | 225 000   |
| 1 |  | 4  | 0 | 0 | 1 | 478 000   | 135 | 2  | 0 | 0 | 0 | 105 500   |
| 1 |  | 3  | 0 | 0 | 0 | 342 000   | 136 | 3  | 0 | 0 | 0 | 346 000   |
| 1 |  | 2  | 0 | 0 | 0 | 32 000    | 137 | 2  | 0 | 0 | 0 | 78 300    |
| 1 |  | 7  | 0 | 0 | 0 | 654 000   | 138 | 5  | 0 | 0 | 0 | 411 000   |

|        |  |     |   |   |    |            |     |     |   |   |    |            |
|--------|--|-----|---|---|----|------------|-----|-----|---|---|----|------------|
| 1      |  | 4   | 0 | 0 | 1  | 1 216 000  | 139 | 7   | 0 | 0 | 0  | 1 106 500  |
| 1      |  | 1   | 0 | 0 | 0  | 21 000     | 140 | 2   | 0 | 0 | 0  | 200 000    |
| 1      |  | 9   | 0 | 0 | 0  | 538 000    | 141 | 3   | 0 | 0 | 1  | 1 510 000  |
| 1      |  | 6   | 0 | 0 | 2  | 367 000    | 142 | 1   | 0 | 0 | 0  | 60 000     |
| 1      |  | 1   | 0 | 0 | 0  | 130 000    | 143 | 2   | 0 | 0 | 0  | 25 000     |
| 1      |  | 2   | 0 | 0 | 0  | 60 000     | 144 | 6   | 0 | 0 | 0  | 620 000    |
| 1      |  | 3   | 0 | 0 | 0  | 61 000     | 145 | 11  | 2 | 1 | 0  | 1 417 500  |
| 1      |  |     |   |   |    |            | 146 | 2   | 0 | 0 | 0  | 75 000     |
| 1      |  | 3   | 0 | 0 | 0  | 234 000    | 147 | 3   | 0 | 0 | 0  | 275 000    |
| 1      |  | 8   | 0 | 0 | 2  | 855 000    | 148 | 7   | 0 | 0 | 0  | 281 000    |
| 1      |  | 8   | 0 | 0 | 2  | 826 000    | 149 | 1   | 0 | 0 | 1  | 1 160 000  |
| 1      |  | 7   | 0 | 0 | 1  | 489 000    | 150 | 2   | 0 | 0 | 0  | 280 000    |
| 1      |  | 1   | 0 | 0 | 0  | 34 000     | 151 | 2   | 0 | 0 | 0  | 110 000    |
| 1      |  |     |   |   |    |            | 152 | 3   | 0 | 1 | 1  | 340 000    |
| 1      |  | 4   | 0 | 0 | 3  | 327 000    | 153 |     |   |   |    |            |
| 1      |  | 5   | 0 | 1 | 1  | 375 000    | 154 |     |   |   |    |            |
| 1      |  | 10  | 0 | 0 | 1  | 625 000    | 155 | 6   | 0 | 1 | 1  | 1 116 000  |
| 1      |  | 10  | 0 | 0 | 6  | 2 960 000  | 156 |     |   |   |    |            |
| 1      |  | 5   | 0 | 0 | 0  | 433 000    | 157 |     |   |   |    |            |
| 1      |  | 6   | 0 | 0 | 1  | 759 000    | 158 | 3   | 0 | 0 | 0  | 240 000    |
| 1      |  | 6   | 0 | 0 | 0  | 524 000    | 159 | 1   | 0 | 0 | 0  | 70 000     |
| 1      |  | 5   | 0 | 0 | 0  | 410 000    | 160 | 4   | 0 | 0 | 0  | 4 401 000  |
| 1      |  | 3   | 0 | 0 | 0  | 210 500    | 161 | 7   | 0 | 0 | 0  | 750 000    |
| 1      |  | 4   | 0 | 0 | 0  | 235 000    | 162 | 3   | 0 | 0 | 0  | 481 000    |
| 1      |  | 9   | 0 | 0 | 0  | 488 000    | 163 | 4   | 0 | 0 | 1  | 430 000    |
| 1      |  | 11  | 1 | 0 | 1  | 842 000    | 164 | 2   | 0 | 0 | 0  | 1 075 000  |
| 1      |  | 3   | 0 | 0 | 1  | 350 000    | 165 |     |   |   |    |            |
| 1      |  | 8   | 1 | 0 | 0  | 275 000    | 166 | 6   | 0 | 0 | 2  | 748 000    |
|        |  |     |   |   |    |            |     |     |   |   |    |            |
|        |  |     |   |   |    |            |     |     |   |   |    |            |
| celkem |  | 371 | 4 | 3 | 35 | 38 245 300 |     | 265 | 3 | 5 | 37 | 41 549 700 |

Součty počtů dopravních nehod podle km staničení v průběhu 2,5 roku v Kraji Vysočina.

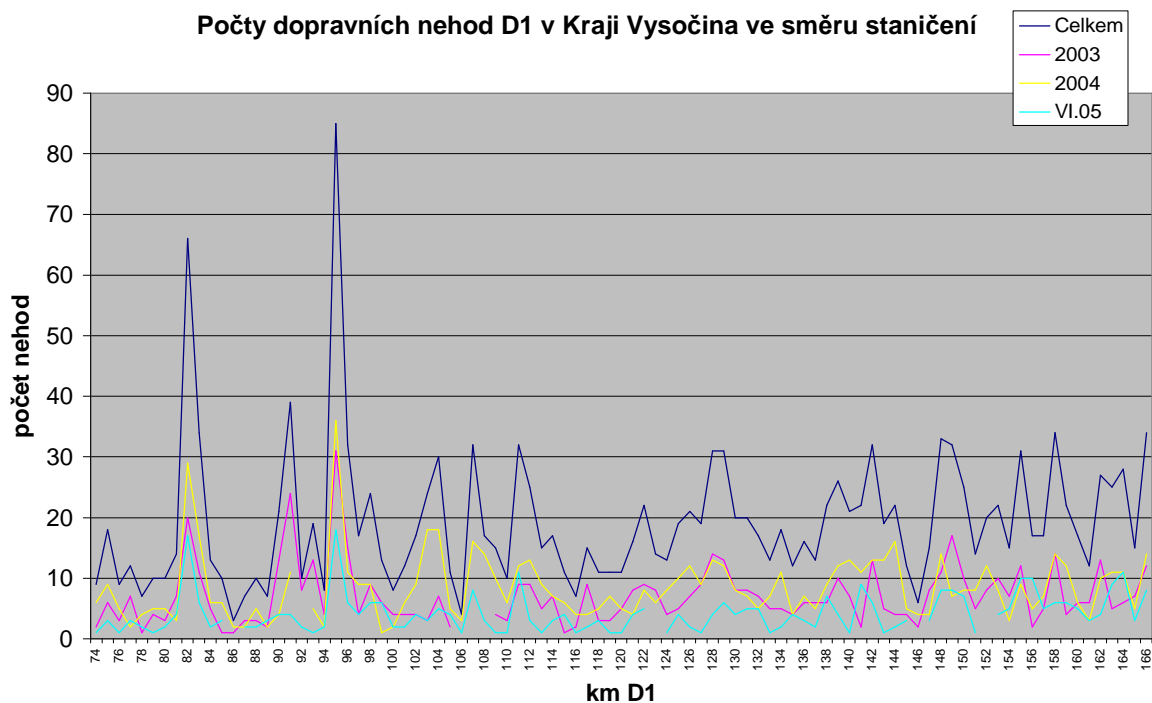
| <b>Nehodovost na dálnicích v České republice po kilometrech v roce 2003-6/2005</b> |       |    |    |    |        |                       |       |    |    |    |        |  |
|--|-------|----|----|----|--------|-----------------------|-------|----|----|----|--------|--|
| ve směru staničení   |       |    |    |    |        | proti směru staničení |       |    |    |    |        |  |
| Číslo  | počet | SZ | TZ | LZ | škoda  | km                    | počet | SZ | TZ | LZ | škoda  |  |
| dálnice  | nehod |    |    |    | v Kč   |                       | nehod |    |    |    | v Kč   |  |
| 1  | 9     | 0  | 0  | 0  | 932100 | 74                    | 4     | 0  | 0  | 0  | 437000 |  |

|          |  |    |   |   |   |         |            |    |   |   |   |         |
|----------|--|----|---|---|---|---------|------------|----|---|---|---|---------|
| <b>1</b> |  | 18 | 0 | 0 | 5 | 1959000 | <b>75</b>  | 11 | 0 | 0 | 1 | 733000  |
| <b>1</b> |  | 9  | 1 | 1 | 1 | 868000  | <b>76</b>  | 9  | 0 | 0 | 0 | 1677000 |
| <b>1</b> |  | 12 | 0 | 0 | 1 | 1392000 | <b>77</b>  | 15 | 0 | 0 | 0 | 879000  |
| <b>1</b> |  | 7  | 0 | 0 | 0 | 710000  | <b>78</b>  | 7  | 0 | 0 | 2 | 839000  |
| <b>1</b> |  | 10 | 0 | 0 | 1 | 1219000 | <b>79</b>  | 5  | 0 | 0 | 0 | 199000  |
| <b>1</b> |  | 10 | 0 | 0 | 2 | 1704000 | <b>80</b>  | 8  | 0 | 0 | 0 | 901000  |
| <b>1</b> |  | 14 | 0 | 0 | 0 | 1136000 | <b>81</b>  | 11 | 0 | 0 | 3 | 1305000 |
| <b>1</b> |  | 66 | 0 | 0 | 1 | 8905000 | <b>82</b>  | 16 | 0 | 2 | 6 | 1757000 |
| <b>1</b> |  | 34 | 0 | 1 | 0 | 3979000 | <b>83</b>  | 23 | 0 | 0 | 6 | 3326100 |
| <b>1</b> |  | 13 | 0 | 0 | 1 | 1361000 | <b>84</b>  | 32 | 0 | 0 | 2 | 3326000 |
| <b>1</b> |  | 10 | 0 | 0 | 0 | 986000  | <b>85</b>  | 26 | 0 | 0 | 6 | 4550000 |
| <b>1</b> |  | 3  | 0 | 0 | 0 | 136500  | <b>86</b>  | 5  | 0 | 1 | 0 | 459000  |
| <b>1</b> |  | 7  | 0 | 0 | 0 | 875000  | <b>87</b>  | 9  | 0 | 0 | 1 | 845000  |
| <b>1</b> |  | 10 | 1 | 0 | 0 | 1031000 | <b>88</b>  | 11 | 0 | 1 | 1 | 1242500 |
| <b>1</b> |  | 7  | 0 | 0 | 0 | 375000  | <b>89</b>  | 12 | 0 | 0 | 0 | 956000  |
| <b>1</b> |  | 21 | 2 | 1 | 4 | 3373000 | <b>90</b>  | 28 | 1 | 0 | 2 | 2239500 |
| <b>1</b> |  | 39 | 0 | 1 | 3 | 4113000 | <b>91</b>  | 14 | 0 | 0 | 0 | 1598000 |
| <b>1</b> |  | 10 | 0 | 0 | 0 | 677000  | <b>92</b>  | 2  | 0 | 0 | 0 | 425000  |
| <b>1</b> |  | 19 | 0 | 0 | 3 | 1850000 | <b>93</b>  | 11 | 0 | 0 | 0 | 348000  |
| <b>1</b> |  | 8  | 0 | 0 | 0 | 710000  | <b>94</b>  | 12 | 0 | 0 | 0 | 564000  |
| <b>1</b> |  | 85 | 1 | 0 | 5 | 7102100 | <b>95</b>  | 25 | 0 | 1 | 1 | 2315000 |
| <b>1</b> |  | 32 | 0 | 0 | 1 | 3150000 | <b>96</b>  | 14 | 0 | 1 | 4 | 2775500 |
| <b>1</b> |  | 17 | 0 | 0 | 0 | 1373100 | <b>97</b>  | 20 | 0 | 2 | 5 | 4319000 |
| <b>1</b> |  | 24 | 0 | 0 | 0 | 2280100 | <b>98</b>  | 9  | 0 | 0 | 0 | 481000  |
| <b>1</b> |  | 13 | 0 | 1 | 2 | 1517000 | <b>99</b>  | 13 | 0 | 1 | 3 | 2146000 |
| <b>1</b> |  | 8  | 0 | 1 | 2 | 730000  | <b>100</b> | 28 | 0 | 0 | 2 | 4591500 |
| <b>1</b> |  | 12 | 0 | 1 | 3 | 1618500 | <b>101</b> | 12 | 0 | 0 | 2 | 2246100 |
| <b>1</b> |  | 17 | 0 | 0 | 1 | 7031100 | <b>102</b> | 12 | 0 | 0 | 3 | 820000  |
| <b>1</b> |  | 24 | 1 | 2 | 2 | 4807100 | <b>103</b> | 13 | 0 | 0 | 2 | 941000  |
| <b>1</b> |  | 30 | 0 | 0 | 4 | 4309000 | <b>104</b> | 15 | 0 | 0 | 1 | 1327000 |
| <b>1</b> |  | 11 | 0 | 0 | 1 | 957100  | <b>105</b> | 9  | 0 | 0 | 0 | 597000  |
| <b>1</b> |  | 4  | 0 | 0 | 0 | 231500  | <b>106</b> | 7  | 0 | 0 | 0 | 1303000 |
| <b>1</b> |  | 32 | 0 | 2 | 9 | 4722500 | <b>107</b> | 13 | 0 | 0 | 1 | 2397000 |
| <b>1</b> |  | 17 | 0 | 0 | 0 | 1427000 | <b>108</b> | 9  | 0 | 1 | 0 | 6897000 |
| <b>1</b> |  | 15 | 0 | 1 | 0 | 1968000 | <b>109</b> | 9  | 0 | 0 | 1 | 1395100 |
| <b>1</b> |  | 10 | 0 | 0 | 1 | 821500  | <b>110</b> | 22 | 1 | 1 | 1 | 4057000 |
| <b>1</b> |  | 32 | 1 | 0 | 0 | 2671000 | <b>111</b> | 30 | 0 | 0 | 4 | 2848100 |
| <b>1</b> |  | 25 | 0 | 1 | 1 | 3628100 | <b>112</b> | 15 | 0 | 0 | 1 | 1869000 |
| <b>1</b> |  | 15 | 0 | 0 | 1 | 8980000 | <b>113</b> | 10 | 0 | 3 | 5 | 1016000 |

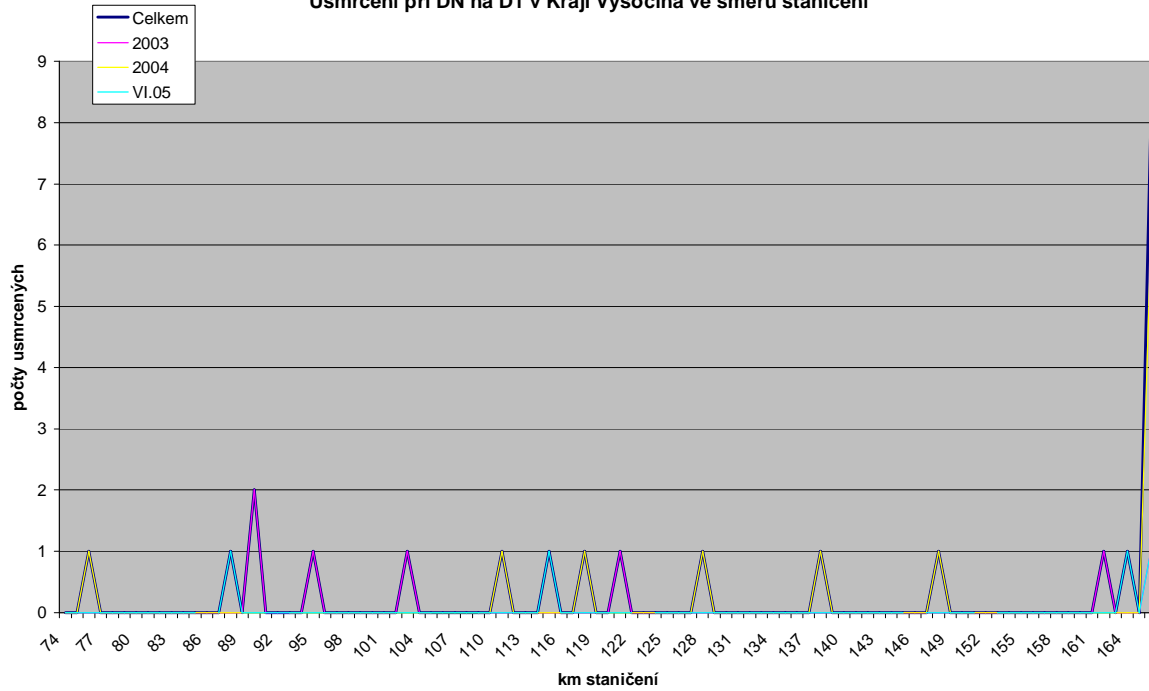
|   |  |    |   |   |   |         |     |    |   |   |   |         |
|---|--|----|---|---|---|---------|-----|----|---|---|---|---------|
| 1 |  | 17 | 0 | 0 | 1 | 1855500 | 114 | 13 | 0 | 1 | 2 | 1705000 |
| 1 |  | 11 | 1 | 0 | 1 | 1249000 | 115 | 17 | 0 | 0 | 2 | 3092000 |
| 1 |  | 7  | 0 | 1 | 0 | 922000  | 116 | 14 | 0 | 0 | 2 | 3001000 |
| 1 |  | 15 | 0 | 0 | 0 | 2968000 | 117 | 16 | 0 | 0 | 1 | 4575000 |
| 1 |  | 11 | 1 | 2 | 1 | 1538000 | 118 | 16 | 1 | 2 | 5 | 2313000 |
| 1 |  | 11 | 0 | 0 | 0 | 1445000 | 119 | 17 | 0 | 0 | 7 | 2084000 |
| 1 |  | 11 | 0 | 0 | 0 | 1553000 | 120 | 20 | 1 | 0 | 7 | 2578000 |
| 1 |  | 16 | 1 | 1 | 5 | 1449000 | 121 | 21 | 1 | 0 | 5 | 8708000 |
| 1 |  | 22 | 0 | 1 | 1 | 2844000 | 122 | 19 | 0 | 0 | 8 | 7081800 |
| 1 |  | 14 | 0 | 0 | 0 | 1367100 | 123 | 13 | 0 | 1 | 1 | 1557000 |
| 1 |  | 13 | 0 | 0 | 1 | 2759000 | 124 | 18 | 0 | 0 | 5 | 2896000 |
| 1 |  | 19 | 0 | 0 | 2 | 1778000 | 125 | 9  | 0 | 0 | 1 | 2227500 |
| 1 |  | 21 | 0 | 0 | 2 | 5302000 | 126 | 5  | 0 | 0 | 1 | 1435000 |
| 1 |  | 19 | 0 | 0 | 0 | 2474500 | 127 | 9  | 0 | 0 | 0 | 1119000 |
| 1 |  | 31 | 1 | 0 | 5 | 4207000 | 128 | 11 | 0 | 0 | 0 | 1355500 |
| 1 |  | 31 | 0 | 0 | 1 | 5206000 | 129 | 15 | 0 | 0 | 1 | 1230000 |
| 1 |  | 20 | 0 | 0 | 2 | 2327500 | 130 | 10 | 0 | 0 | 2 | 2014000 |
| 1 |  | 20 | 0 | 0 | 3 | 1799500 | 131 | 11 | 0 | 1 | 1 | 1333000 |
| 1 |  | 17 | 0 | 0 | 1 | 2097000 | 132 | 14 | 0 | 0 | 2 | 1664000 |
| 1 |  | 13 | 0 | 0 | 0 | 1405000 | 133 | 14 | 0 | 0 | 7 | 1426000 |
| 1 |  | 18 | 0 | 0 | 0 | 1006800 | 134 | 6  | 0 | 0 | 1 | 866000  |
| 1 |  | 12 | 0 | 1 | 1 | 1278000 | 135 | 19 | 0 | 0 | 4 | 3507500 |
| 1 |  | 16 | 0 | 0 | 0 | 1601500 | 136 | 14 | 0 | 0 | 0 | 1173000 |
| 1 |  | 13 | 0 | 0 | 2 | 1442000 | 137 | 10 | 0 | 0 | 0 | 709300  |
| 1 |  | 22 | 1 | 0 | 1 | 4053000 | 138 | 9  | 0 | 0 | 1 | 556500  |
| 1 |  | 26 | 0 | 0 | 2 | 2554000 | 139 | 20 | 0 | 0 | 1 | 3146000 |
| 1 |  | 21 | 0 | 0 | 4 | 2913100 | 140 | 6  | 0 | 0 | 2 | 314000  |
| 1 |  | 22 | 0 | 2 | 0 | 2710000 | 141 | 14 | 0 | 0 | 8 | 3951000 |
| 1 |  | 32 | 0 | 2 | 6 | 2732000 | 142 | 12 | 0 | 0 | 1 | 526000  |
| 1 |  | 19 | 0 | 0 | 0 | 1204000 | 143 | 17 | 0 | 0 | 1 | 865000  |
| 1 |  | 22 | 0 | 0 | 1 | 1819000 | 144 | 17 | 0 | 0 | 2 | 1897000 |
| 1 |  | 12 | 0 | 0 | 0 | 473500  | 145 | 46 | 2 | 2 | 1 | 3500200 |
| 1 |  | 6  | 0 | 0 | 2 | 395500  | 146 | 9  | 2 | 1 | 0 | 320500  |
| 1 |  | 15 | 0 | 0 | 0 | 1083000 | 147 | 13 | 0 | 1 | 5 | 1115000 |
| 1 |  | 33 | 1 | 1 | 4 | 3420500 | 148 | 18 | 1 | 1 | 9 | 1694000 |
| 1 |  | 32 | 0 | 0 | 2 | 2983000 | 149 | 15 | 1 | 0 | 4 | 2191500 |
| 1 |  | 25 | 0 | 1 | 7 | 2317000 | 150 | 11 | 0 | 0 | 0 | 714000  |
| 1 |  | 14 | 0 | 0 | 2 | 1174000 | 151 | 16 | 0 | 0 | 2 | 1397000 |
| 1 |  | 20 | 0 | 1 | 2 | 1616000 | 152 | 12 | 0 | 1 | 4 | 1447000 |

|        |  |      |    |    |     |             |     |      |    |    |     |             |
|--------|--|------|----|----|-----|-------------|-----|------|----|----|-----|-------------|
| 1      |  | 22   | 0  | 0  | 8   | 1747000     | 153 | 11   | 0  | 1  | 2   | 805000      |
| 1      |  | 15   | 0  | 1  | 2   | 1222000     | 154 | 7    | 0  | 0  | 2   | 713000      |
| 1      |  | 31   | 0  | 0  | 8   | 2936000     | 155 | 12   | 0  | 1  | 1   | 1448000     |
| 1      |  | 17   | 0  | 1  | 10  | 3633000     | 156 | 4    | 0  | 0  | 1   | 183000      |
| 1      |  | 17   | 0  | 0  | 6   | 1404000     | 157 | 10   | 0  | 0  | 2   | 570000      |
| 1      |  | 34   | 0  | 0  | 9   | 3295000     | 158 | 26   | 0  | 0  | 6   | 2477000     |
| 1      |  | 22   | 0  | 0  | 3   | 2057000     | 159 | 11   | 0  | 0  | 0   | 537000      |
| 1      |  | 17   | 0  | 0  | 3   | 1202000     | 160 | 22   | 0  | 0  | 2   | 5551000     |
| 1      |  | 12   | 0  | 0  | 1   | 945500      | 161 | 15   | 0  | 0  | 0   | 915000      |
| 1      |  | 27   | 1  | 0  | 2   | 1552100     | 162 | 13   | 0  | 1  | 3   | 1357000     |
| 1      |  | 25   | 0  | 0  | 3   | 1798000     | 163 | 11   | 0  | 0  | 1   | 638000      |
| 1      |  | 28   | 1  | 3  | 6   | 3759000     | 164 | 14   | 0  | 0  | 1   | 2185000     |
| 1      |  | 15   | 0  | 0  | 9   | 1009000     | 165 | 11   | 0  | 0  | 0   | 617000      |
| 1      |  | 34   | 8  | 2  | 9   | 6638000     | 166 | 27   | 0  | 0  | 3   | 2195000     |
|        |  |      |    |    |     |             |     |      |    |    |     |             |
|        |  |      |    |    |     |             |     |      |    |    |     |             |
| celkem |  | 1794 | 23 | 33 | 196 | 214 135 900 |     | 1316 | 11 | 28 | 196 | 176 423 700 |

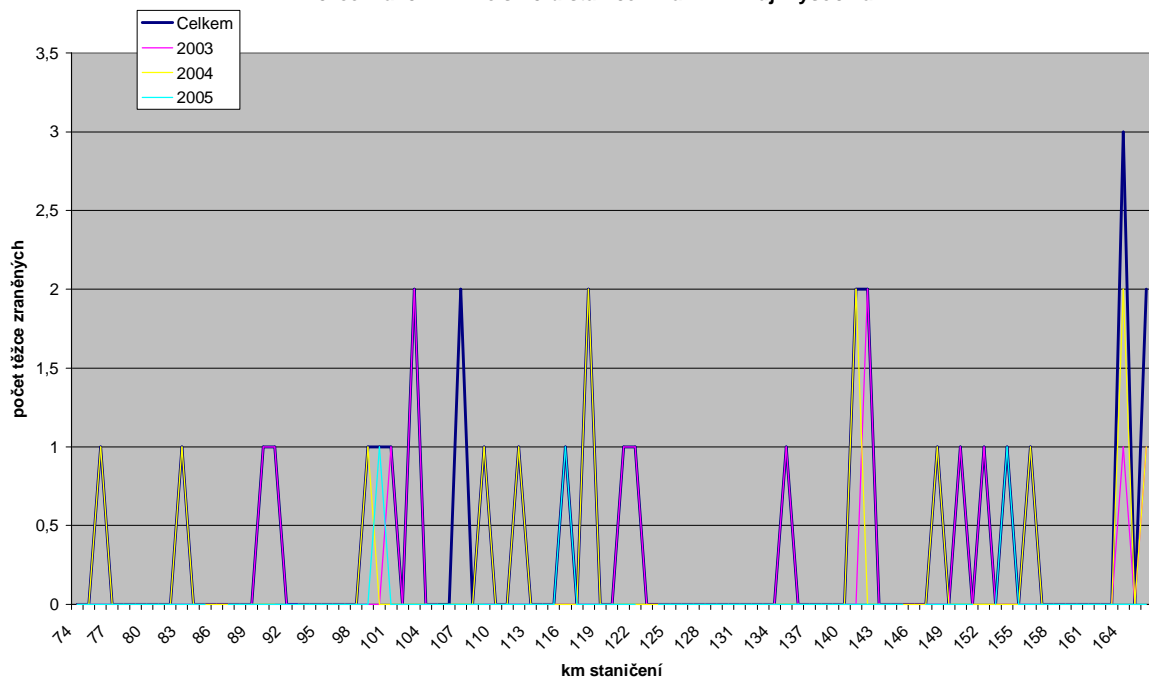
Nejvíce nebezpečná nehodová místa podle počtu nehod

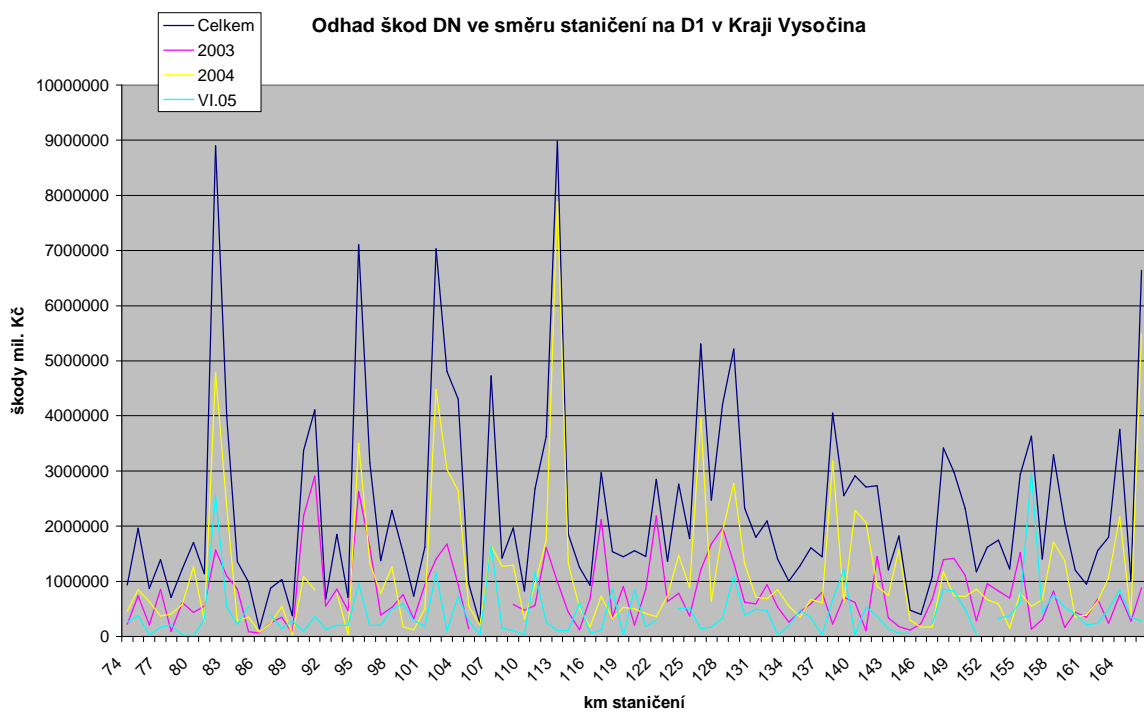
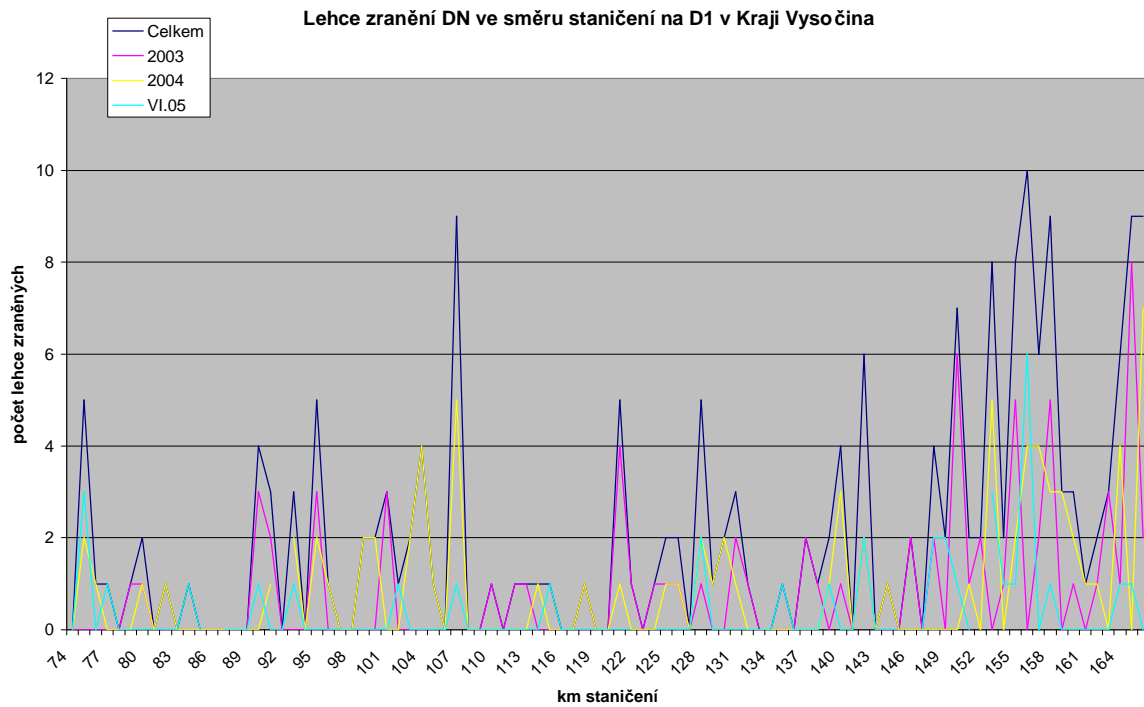


Usmrcení při DN na D1 v Kraji Vysočina ve směru staničení

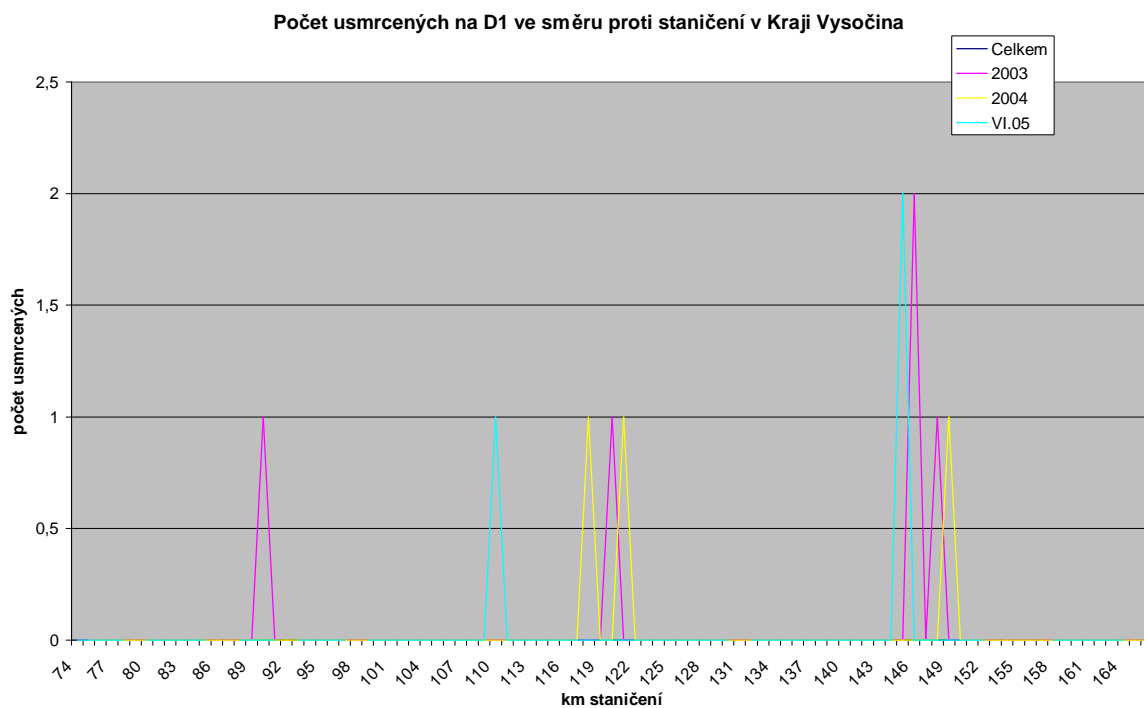
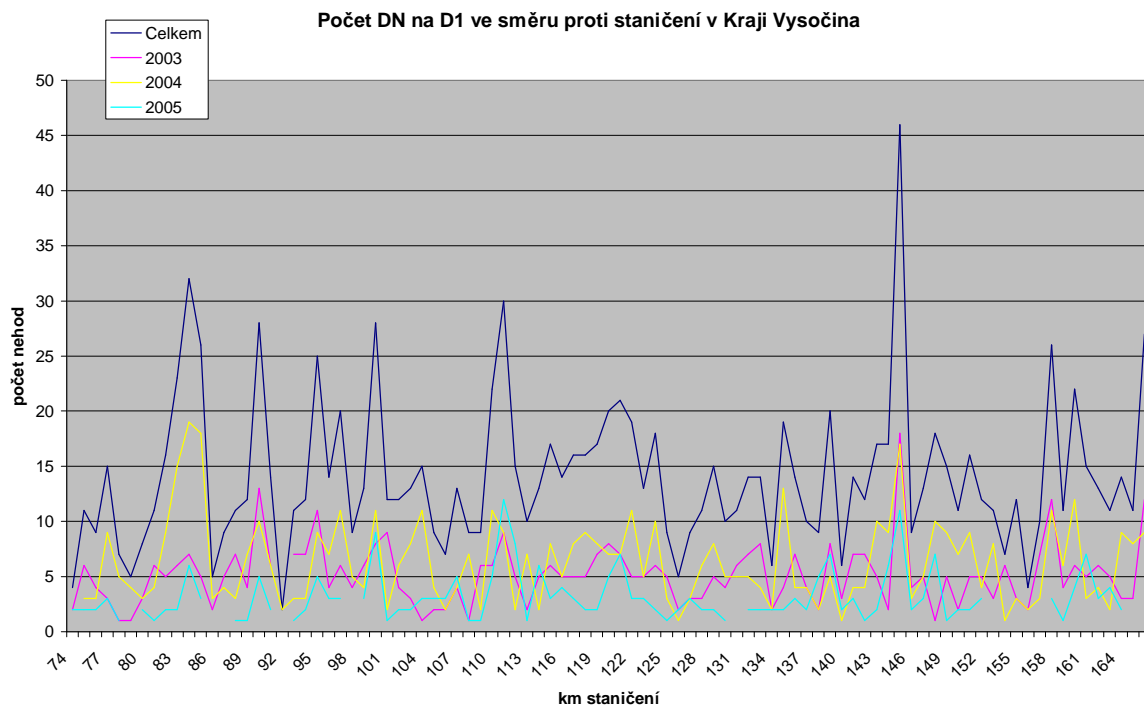


Těžce zranění DN ve směru staničení na D1 v Kraji Vysočina



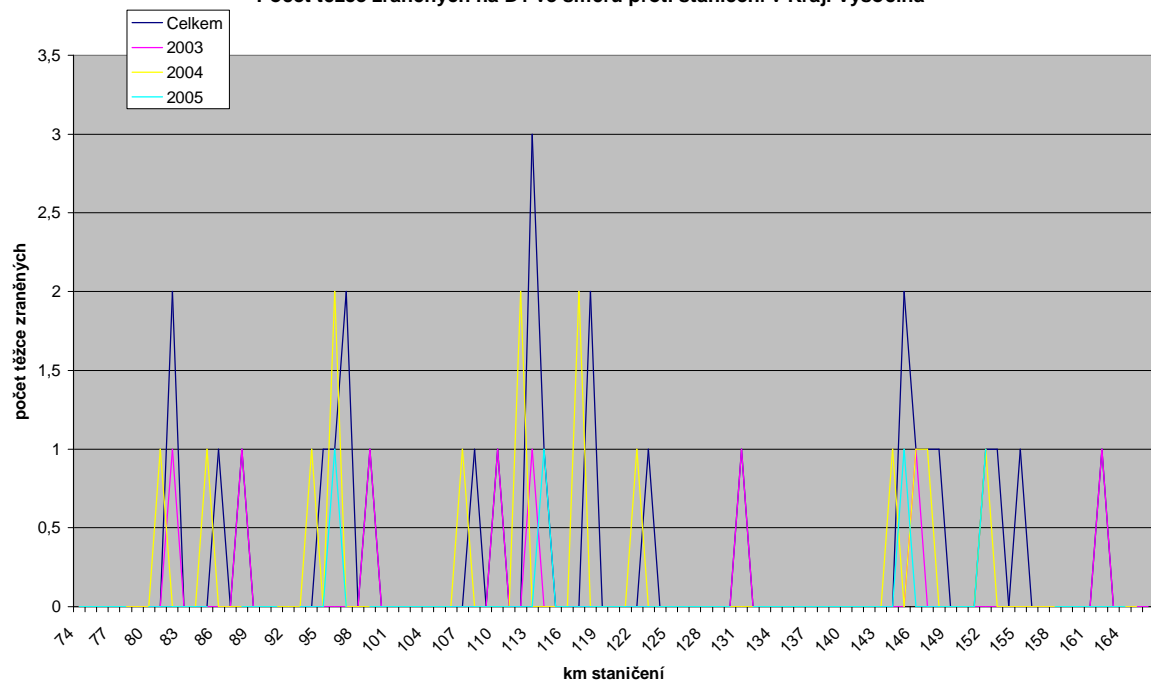


Stejné vyhodnocení situace na D1 i ve směru proti staničení:

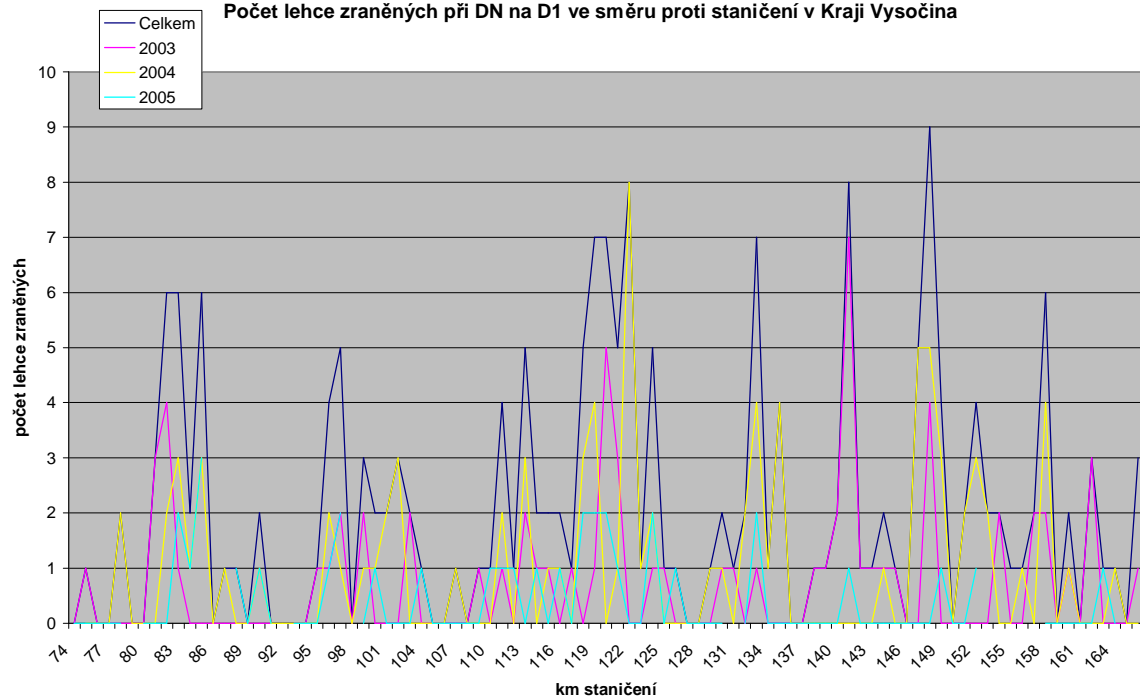


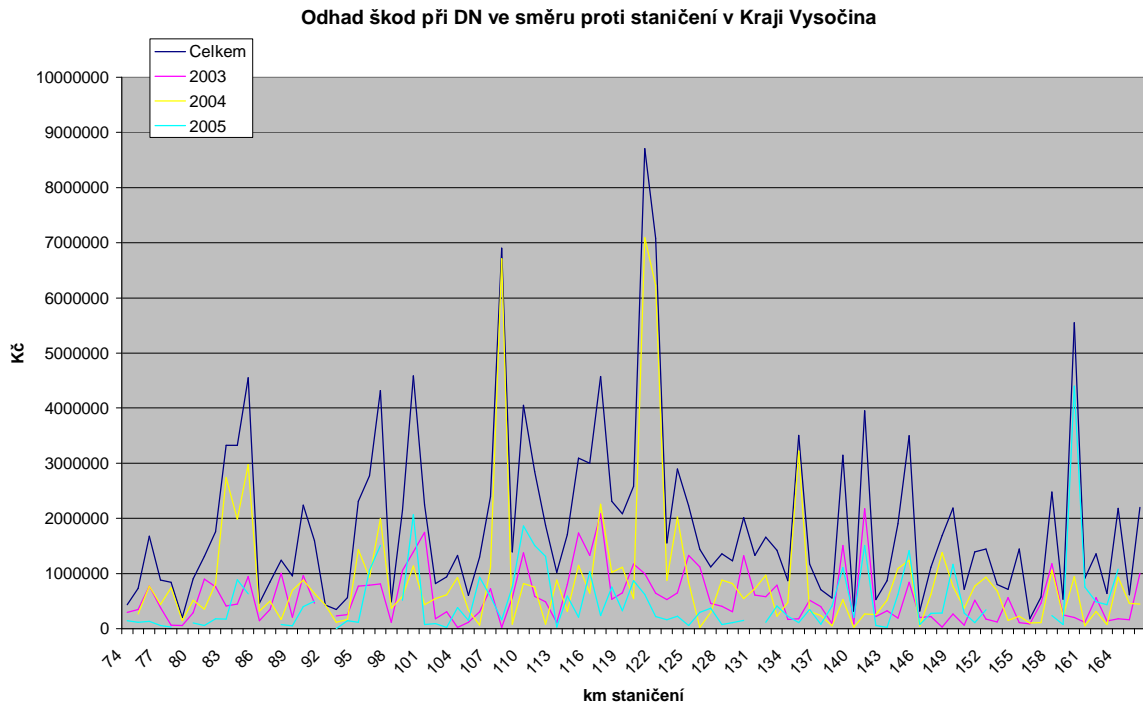


Počet těžce zraněných na D1 ve směru proti staničení v Kraji Vysočina



Počet lehce zraněných při DN na D1 ve směru proti staničení v Kraji Vysočina





#### 4. Vyhodnocení nebezpečných míst na D1 v Kraji Vysočina

##### A. z hlediska počtu nehod

Z hlediska počtu nehod jsou nejnebezpečnějšími místy ve směru z Prahy do Brna km 95, resp. 91 až 98 km. jde o úsek za exitem Humpolec (90 km).

Další krizovým místem ve stejném směru je 82 km, resp. úsek 81 až 84 km. To je bezprostředně za exitem Koberovice před Humpolcem.

Dále je řada míst, kde je také relativně vysoký počet nehod – např. 128 km, 148 km, 158 km apod.

V obráceném směru je nejhorší situace na km 145, resp. v širším úseku 143 až 151 km. Tento úsek je v oblasti Velkého Meziříčí. Další řada stejně nebezpečných úseků ve směru do Prahy je na km 84, 99, 96, 100 a 111 km.

Vzhledem k počtu nehod se dá za nejnebezpečnější úsek považovat na D1 obecně úsek okolo Humpolce a úsek okolo Velkého Meziříčí.

##### B. z hlediska počtu usmrcených

Na dálnici obecně dochází k menšímu počtu usmrcených. Vliv na hodnocení nejnebezpečnějšího místa má tak nehoda autobusu, při které došlo k více úmrtím na jednom

místě. Tato skutečnost však neříká nic o nebezpečnosti celého úseku D1 v Kraji Vysočina z pohledu častých úmrtí.

Ve směru Praha – Brno došlo k největšímu počtu úmrtí na 166 km, kde je odpočívka Devět Křížů. V opačném směru nejvíce lidí zemřelo na km 146-146 na exitu Velké Meziříčí.

C. z hlediska počtu těžce zraněných

Situace je obdobná jako u usmrcených. Nejvíce těžce zraněných ve směru Praha – Brno bylo na km 164, dále na km 103, 107, 118, 141, 142 a 168. V opačném směru je z titulu těžkých zranění nejnebezpečnější km 113, dále pak 82, 96, 97, 112, 117, 118 a 145 km.

D. z hlediska lehce zraněných

Nejnebezpečnější úsek z hlediska lehkých zranění je část dálnice ve směru Praha – Brno mezi 150 a 158 km a dále na 107 km. V opačném směru bylo nejvíce lehce zraněných mezi 141 a 148 km. Další nebezpečná místa jsou na 141 km, 119 až 122, 133, 82 až 85 km.

E. z hlediska odhadů škod na majetku

Největší škody z DN jsou evidovány ve směru Praha – Brno na 82 a 113 km a to ve výši 9 mil. Kč na každém z těchto míst.

V opačném směru jde o 108 a 121 km s kumulovaným odhadem škody 8,7 mil. Kč. V tomto případě šlo o velké škody v jednom sledovaném roce. K pravidelným opakovaným každoročním škodám dochází také na 97 až 100 km, 110, 117 km, 141 až 145 km.

| Brno - Praha                 |                            |                                 |                               |                            | KM | Praha - Brno                 |                            |                                 |                               |                            |
|------------------------------|----------------------------|---------------------------------|-------------------------------|----------------------------|----|------------------------------|----------------------------|---------------------------------|-------------------------------|----------------------------|
| Počet nehod<br>(více než 30) | Usmrcených<br>(více než 2) | Těžce zraněných<br>(dva a více) | Lehce zraněných<br>(6 a více) | Škody<br>(více než 5 mil.) |    | Počet nehod<br>(více než 30) | Usmrcených<br>(více než 2) | Těžce zraněných<br>(dva a více) | Lehce zraněných<br>(6 a více) | Škody<br>(více než 5 mil.) |
|                              |                            |                                 |                               |                            | 74 |                              |                            |                                 |                               |                            |
|                              |                            |                                 |                               |                            | 75 |                              |                            |                                 |                               |                            |
|                              |                            |                                 |                               |                            | 76 |                              |                            |                                 |                               |                            |
|                              |                            |                                 |                               |                            | 77 |                              |                            |                                 |                               |                            |
|                              |                            |                                 |                               |                            | 78 |                              |                            |                                 |                               |                            |
|                              |                            |                                 |                               |                            | 79 |                              |                            |                                 |                               |                            |
|                              |                            |                                 |                               |                            | 80 |                              |                            |                                 |                               |                            |
|                              |                            |                                 |                               |                            | 81 |                              |                            |                                 |                               |                            |
|                              |                            |                                 |                               |                            | 82 |                              |                            |                                 |                               |                            |
|                              |                            |                                 |                               |                            | 83 |                              |                            |                                 |                               |                            |

|  |  |  |  |     |  |  |  |  |
|--|--|--|--|-----|--|--|--|--|
|  |  |  |  | 84  |  |  |  |  |
|  |  |  |  | 85  |  |  |  |  |
|  |  |  |  | 86  |  |  |  |  |
|  |  |  |  | 87  |  |  |  |  |
|  |  |  |  | 88  |  |  |  |  |
|  |  |  |  | 89  |  |  |  |  |
|  |  |  |  | 90  |  |  |  |  |
|  |  |  |  | 91  |  |  |  |  |
|  |  |  |  | 92  |  |  |  |  |
|  |  |  |  | 93  |  |  |  |  |
|  |  |  |  | 94  |  |  |  |  |
|  |  |  |  | 95  |  |  |  |  |
|  |  |  |  | 96  |  |  |  |  |
|  |  |  |  | 97  |  |  |  |  |
|  |  |  |  | 98  |  |  |  |  |
|  |  |  |  | 99  |  |  |  |  |
|  |  |  |  | 100 |  |  |  |  |
|  |  |  |  | 101 |  |  |  |  |
|  |  |  |  | 102 |  |  |  |  |
|  |  |  |  | 103 |  |  |  |  |
|  |  |  |  | 104 |  |  |  |  |
|  |  |  |  | 105 |  |  |  |  |
|  |  |  |  | 106 |  |  |  |  |
|  |  |  |  | 107 |  |  |  |  |
|  |  |  |  | 108 |  |  |  |  |
|  |  |  |  | 109 |  |  |  |  |
|  |  |  |  | 110 |  |  |  |  |
|  |  |  |  | 111 |  |  |  |  |
|  |  |  |  | 112 |  |  |  |  |
|  |  |  |  | 113 |  |  |  |  |
|  |  |  |  | 114 |  |  |  |  |
|  |  |  |  | 115 |  |  |  |  |
|  |  |  |  | 116 |  |  |  |  |
|  |  |  |  | 117 |  |  |  |  |
|  |  |  |  | 118 |  |  |  |  |
|  |  |  |  | 119 |  |  |  |  |
|  |  |  |  | 120 |  |  |  |  |
|  |  |  |  | 121 |  |  |  |  |
|  |  |  |  | 122 |  |  |  |  |

|        |         |       |        |     |     |        |  |       |        |  |
|--------|---------|-------|--------|-----|-----|--------|--|-------|--------|--|
|        |         |       | Orange | Red | 123 |        |  |       |        |  |
|        |         |       |        |     | 124 |        |  |       |        |  |
|        |         |       |        |     | 125 |        |  |       |        |  |
|        |         |       |        |     | 126 |        |  |       |        |  |
|        |         |       |        |     | 127 |        |  |       |        |  |
|        |         |       |        |     | 128 | Yellow |  |       | Orange |  |
|        |         |       |        |     | 129 | Yellow |  |       | Orange |  |
|        |         |       |        |     | 130 | Yellow |  |       |        |  |
|        |         |       |        |     | 131 |        |  |       |        |  |
|        |         |       |        |     | 132 |        |  |       |        |  |
|        |         |       | Orange |     | 133 |        |  |       |        |  |
|        |         |       | Orange |     | 134 |        |  |       |        |  |
|        |         |       |        |     | 135 |        |  |       |        |  |
|        |         |       |        |     | 136 |        |  |       |        |  |
|        |         |       |        |     | 137 |        |  |       |        |  |
|        |         |       |        |     | 138 |        |  |       |        |  |
|        |         |       |        |     | 139 |        |  |       |        |  |
|        |         |       |        |     | 140 |        |  |       |        |  |
|        |         |       | Orange |     | 141 |        |  | Green |        |  |
|        |         |       | Orange |     | 142 | Yellow |  | Green | Orange |  |
|        |         |       |        |     | 143 | Yellow |  |       | Orange |  |
|        |         |       |        |     | 144 |        |  |       |        |  |
| Yellow | Magenta | Green |        |     | 145 |        |  |       |        |  |
| Yellow | Magenta |       |        |     | 146 |        |  |       |        |  |
|        |         |       |        |     | 147 |        |  |       |        |  |
|        |         |       | Orange |     | 148 | Yellow |  |       |        |  |
|        |         |       | Orange |     | 149 | Yellow |  |       |        |  |
|        |         |       |        |     | 150 | Yellow |  |       | Orange |  |
|        |         |       |        |     | 151 |        |  |       | Orange |  |
|        |         |       |        |     | 152 |        |  |       |        |  |
|        |         |       |        |     | 153 |        |  |       | Orange |  |
|        |         |       |        |     | 154 |        |  |       | Orange |  |
|        |         |       |        |     | 155 | Yellow |  |       | Orange |  |
|        |         |       |        |     | 156 |        |  |       | Orange |  |
|        |         |       |        |     | 157 |        |  |       | Orange |  |
|        |         |       | Orange |     | 158 | Yellow |  |       | Orange |  |
|        |         |       |        |     | 159 | Yellow |  |       | Orange |  |
|        |         |       |        | Red | 160 |        |  |       |        |  |
|        |         |       |        | Red | 161 |        |  |       |        |  |

|  |  |  |  |  |            |  |  |  |  |  |
|--|--|--|--|--|------------|--|--|--|--|--|
|  |  |  |  |  | <b>162</b> |  |  |  |  |  |
|  |  |  |  |  | <b>163</b> |  |  |  |  |  |
|  |  |  |  |  | <b>164</b> |  |  |  |  |  |
|  |  |  |  |  | <b>165</b> |  |  |  |  |  |
|  |  |  |  |  | <b>166</b> |  |  |  |  |  |