

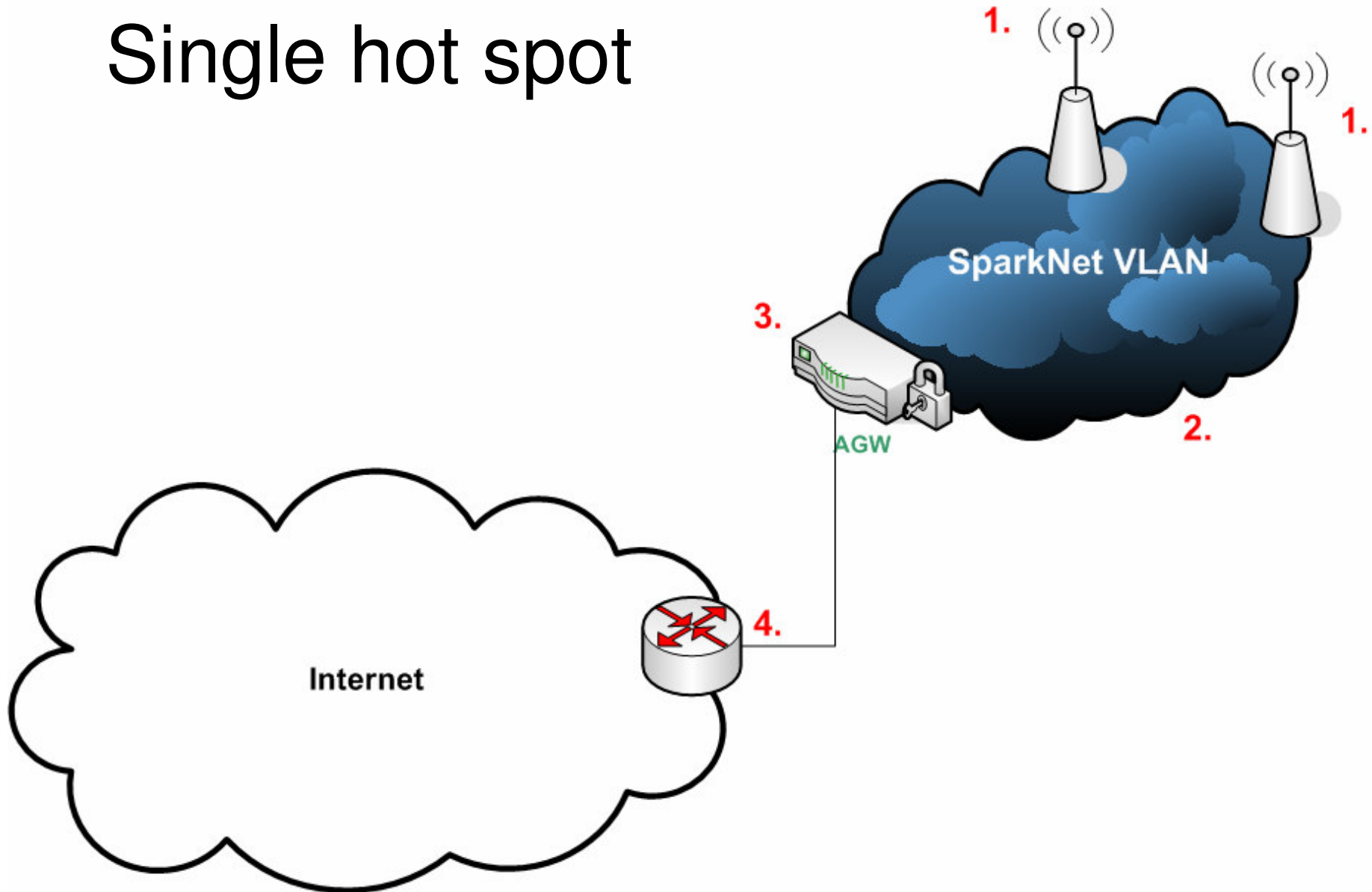
SPARK_{NET}

- Single hot spot-
- Multi operator environment –
- SparkNet SOHO / OpenSpark –
- centralized management and monitoring -

Single hot spot

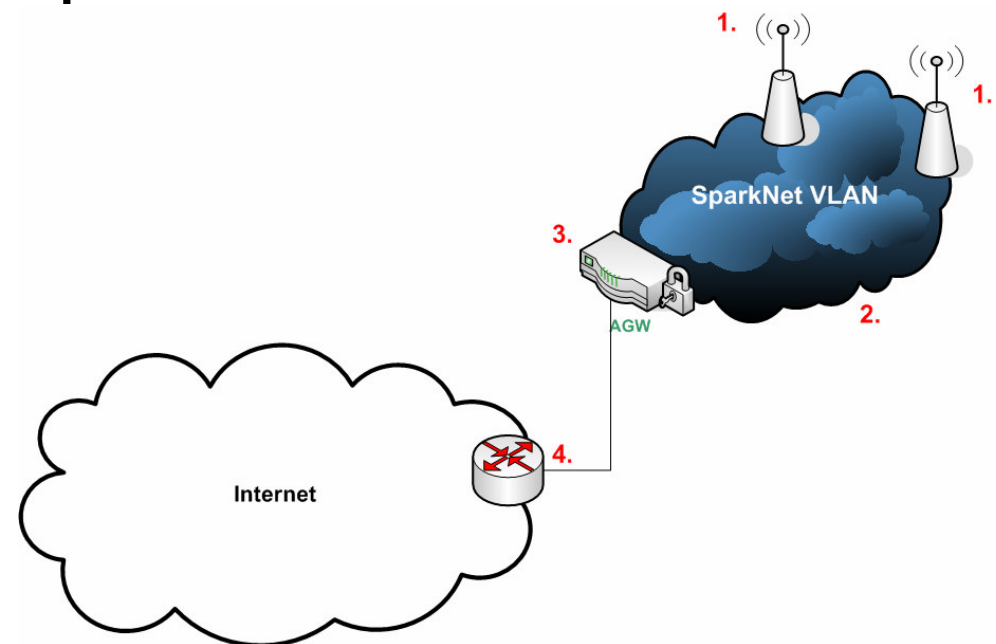
- SparkNet Enterprise –
- SparkNet Business Solution –
- SparkNet Business Center -

Single hot spot



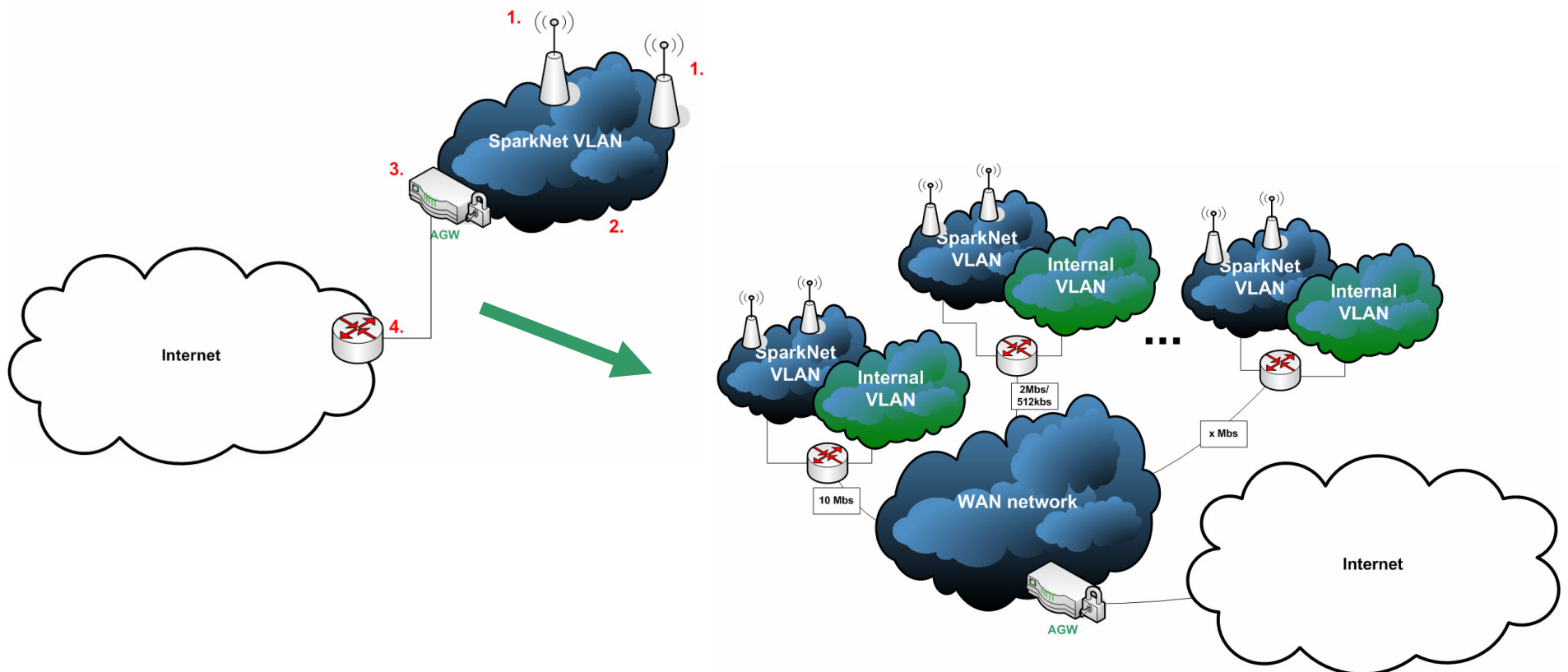
1. Base stations

- 802.11b and 802.11g compliant base stations
- Radio network is open; there is no access control



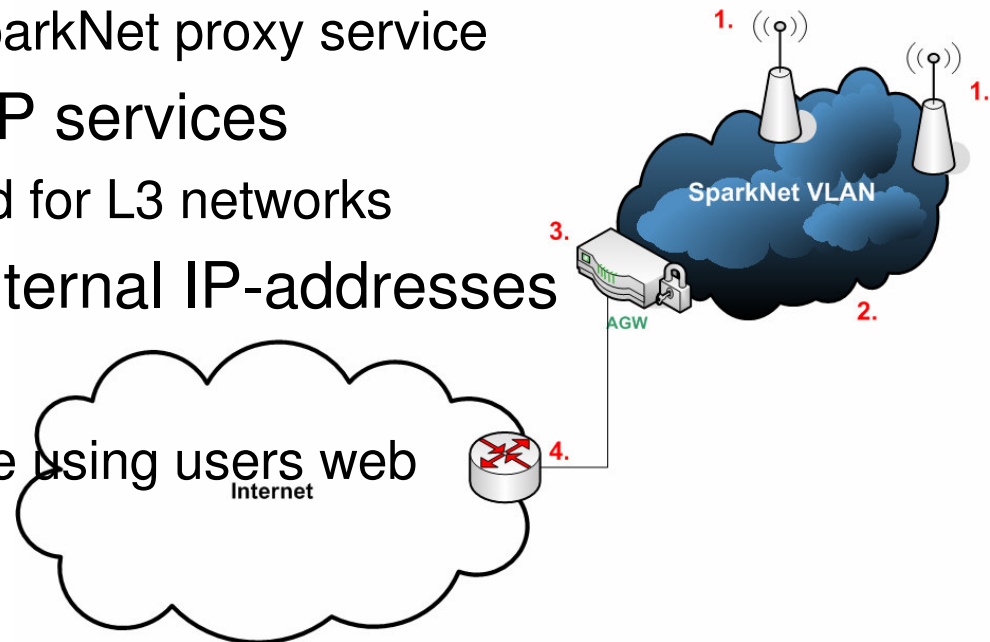
2. SparkNet VLAN's

- SparkNet uses always either physically or logically separated LAN as it's backbone
- Scales to WAN and L3 routed environment



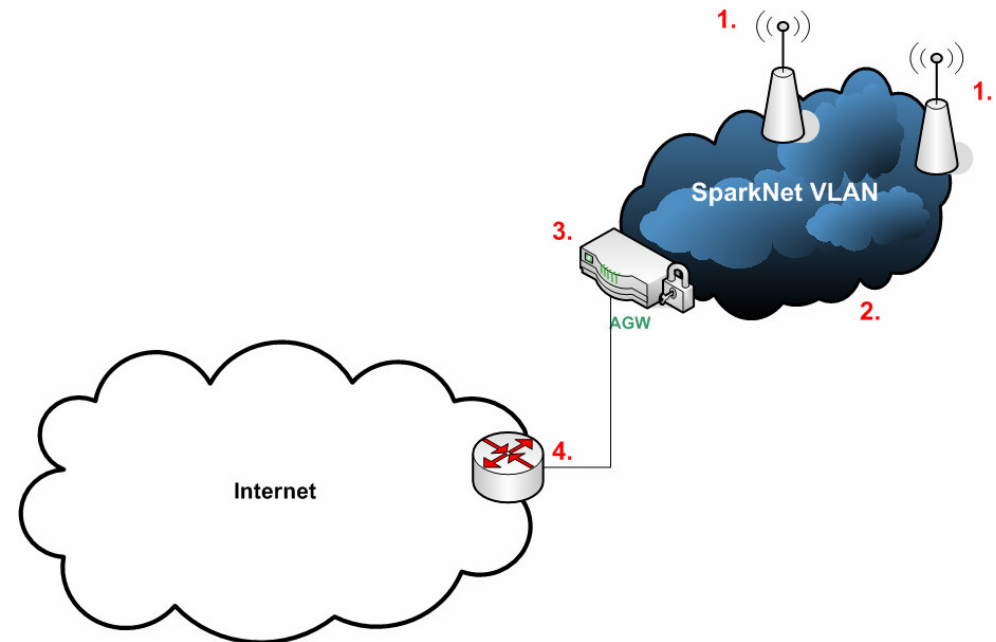
3. Authentication gateway

- Authentication gateway
 - Authenticates users
 - Authentication is done either locally or using RADIUS service. RADIUS service is centralised using SparkNet proxy service
 - Provides local DHCP services
 - relay service needed for L3 networks
 - Performs NAT for internal IP-addresses
 - HTTP server:
 - Authentication is done using users web browser



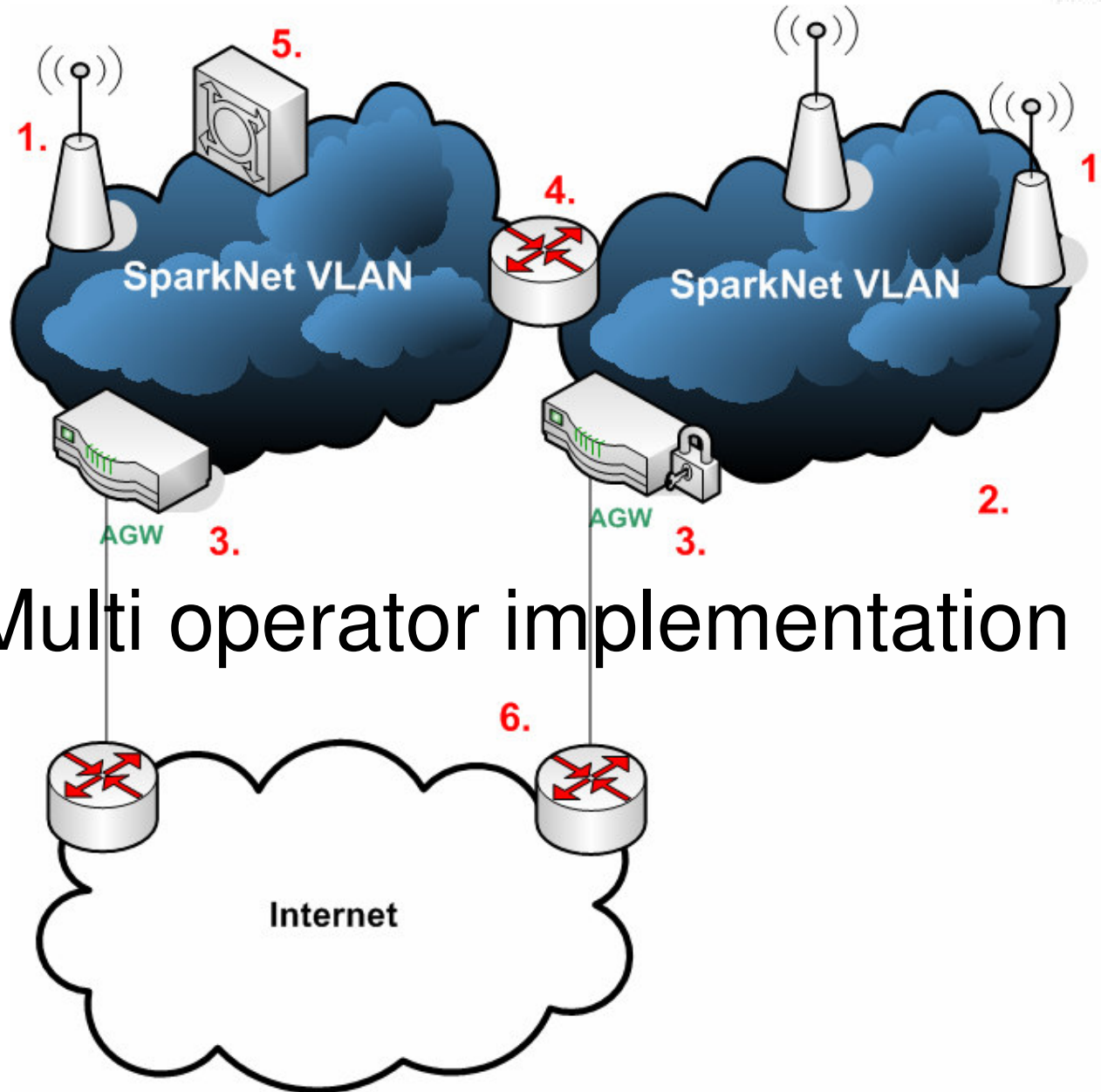
4. Internet connection

- Requirements
 - One Internet IP address for AGW use
 - Non limited IP traffic



Multioperator environment

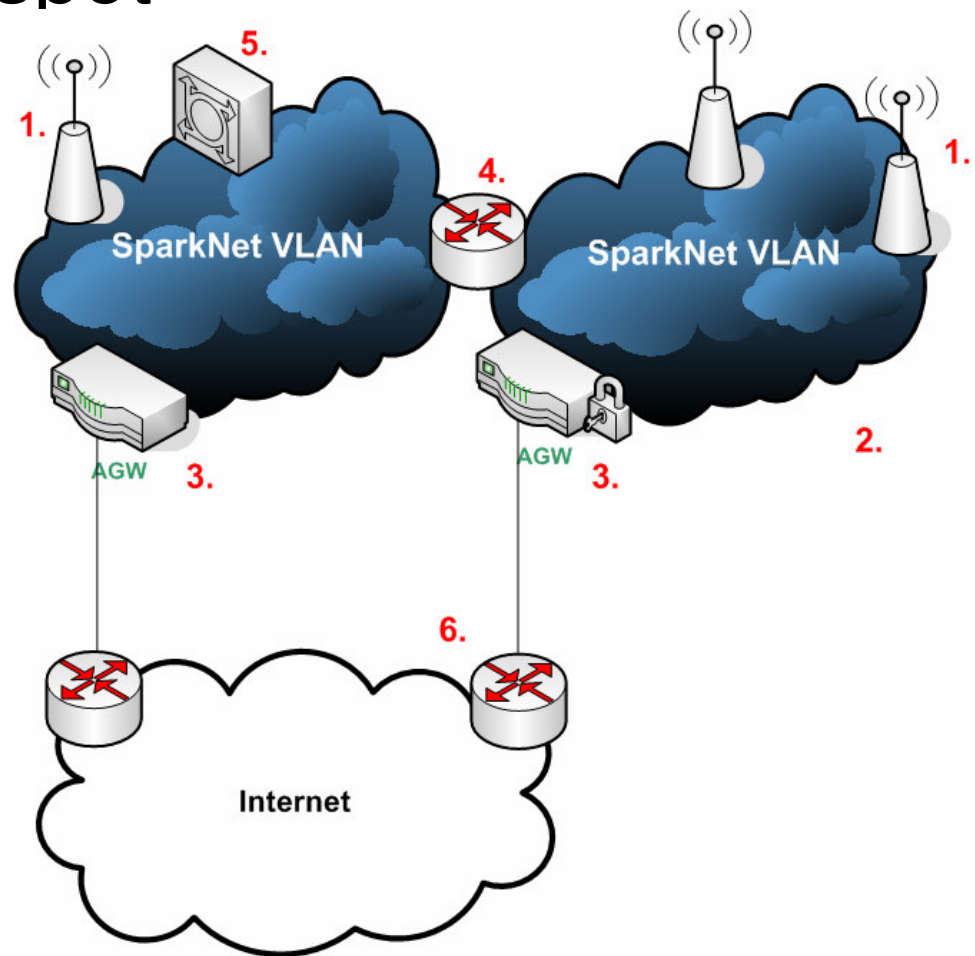
- SparkNet city -



Multi operator implementation

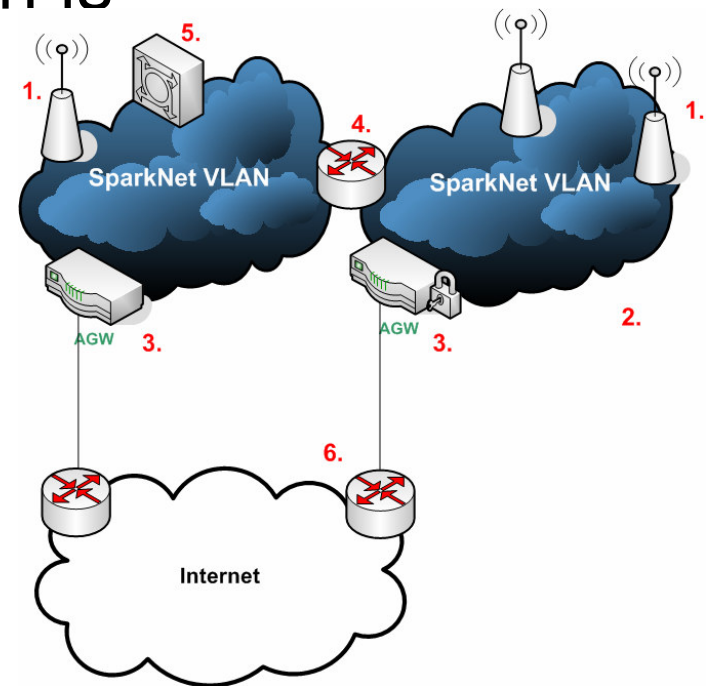
1, 2 and 3 ...

- As with single hot spot implementation



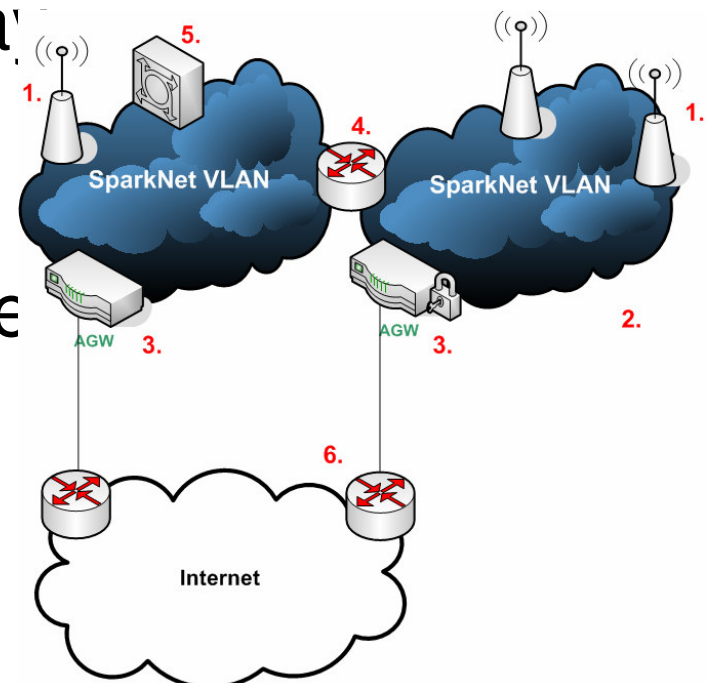
4. Dedicated routers

- Separated layer 2 segments are joined using dedicated routers
- Multi operator environment in Turku uses Linux boxes which is not actual requirement
- Requirements for routers:
 - Policy routing
 - DHCP relay service

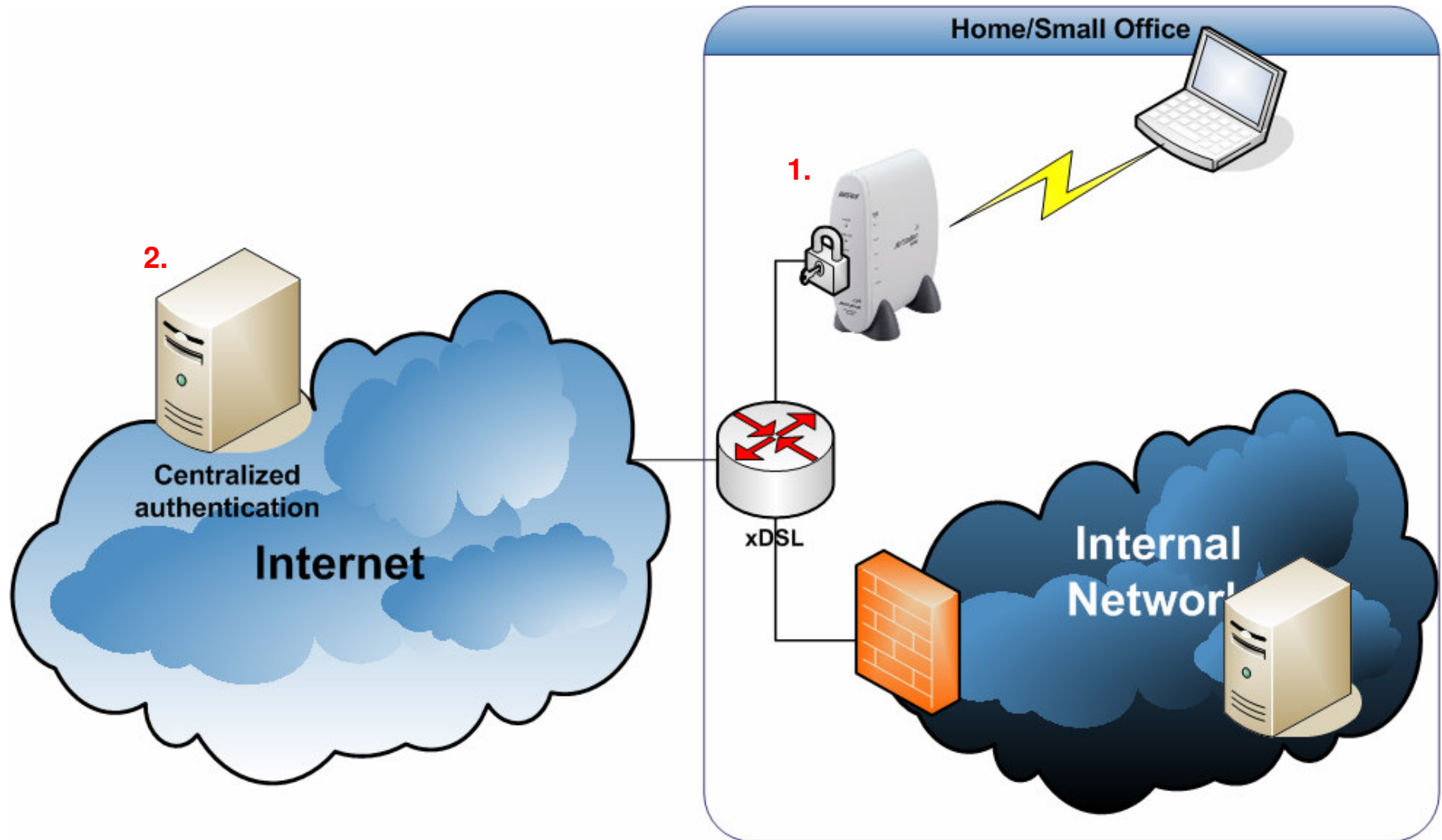


5. Operator selection services

- Network card MAC addresses are bound to operator
 - This binding is used to relay DHCP request to users operator
 - Selection is done using use web browser

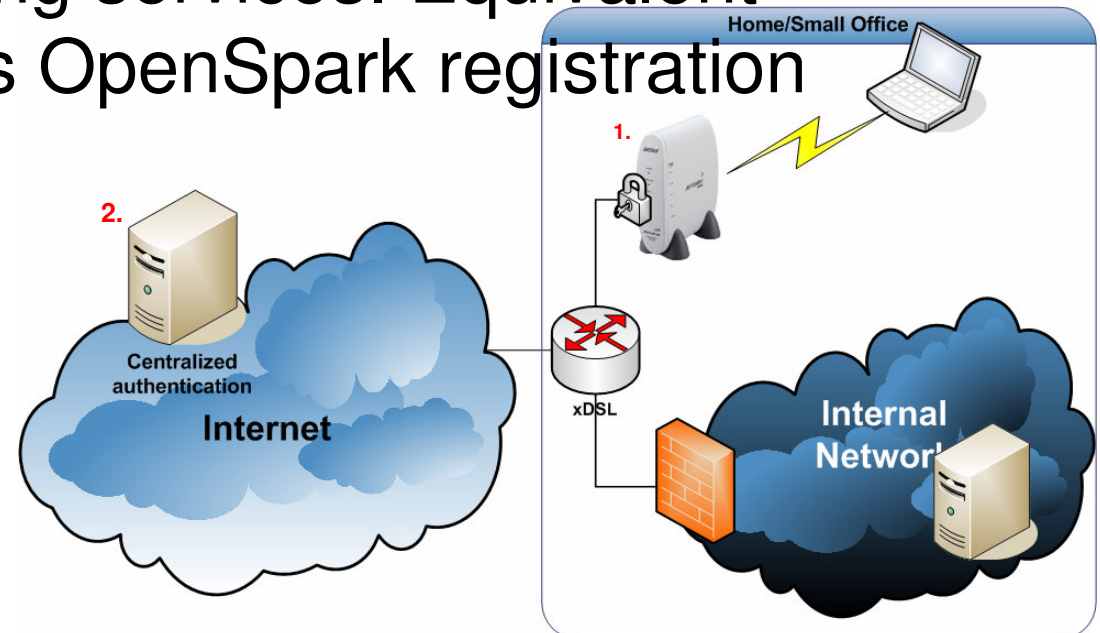


SOHO and OpenSpark



Embedded AGW

1. Authentication gateway functionality is embedded in WLAN base station
2. Centralized authentication system is used for providing roaming services. Equivalent system provides OpenSpark registration services.



OpenWRT based firmware

OpenWRT based firmware

- for efficient and secure management
 - ssh
- Standard bridging functionality used in SparkNet environment
- Some functional improvements compared to standard access points
 - Application level filtering for rogue DHCP servers on wireless network where normal access list control is not adequate
 - Windows XP ICS



centralized management and monitoring

Roaming

- Centralized authentication services
 - RADIUS
- Enables roaming
- Accounting and auditing

Management and monitoring

- Management connection to all SparkNet access points
- Monitoring
 - Real time monitoring for AGWs and individual access points
 - e-mail alarms
 - ...which may in turn trigger for example SMS alert
 - E-mail addresses customizable per organization

